



Holland Park Mews, W11

£1,038 Per week

A spacious three double bedroom mews house, neutrally decorated throughout with an open plan reception room, dining and modern kitchen area with wooden flooring throughout.

Ideally located 0.1 miles from the array of restaurants, bars and amenities of Notting Hill and Holland Park. This is a highly sought-after location. The garage is not included.

Features

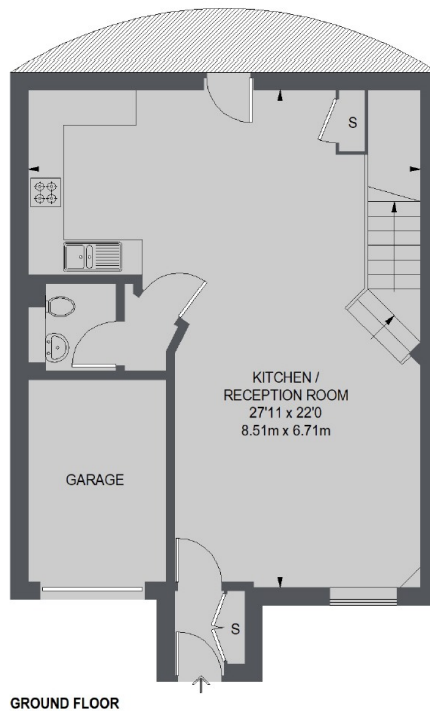
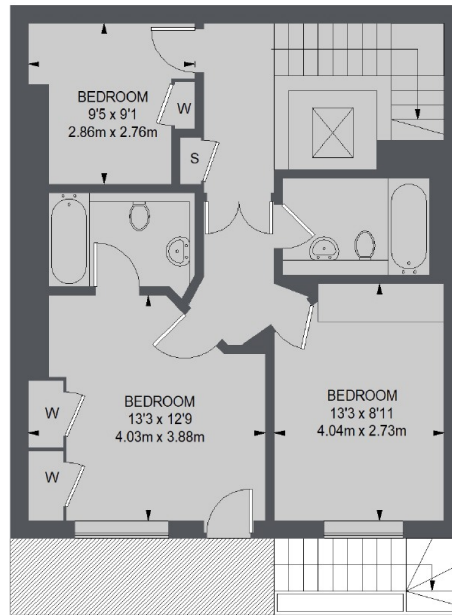
- Three Bedroom Mews House
- Spacious Property
- Pretty Cobbled Mews
- Balcony
- Wood Floors
- Close to Holland Park
- Professionally Managed



Holland Park Mews, W11



Holland Park Mews, London, W11



TOTAL APPROX. FLOOR AREA (EXCLUDING GARAGE)
1185 SQ. FT. (110.12 SQ. M.)

Dexters

Notting Hill
121-123 Notting Hill Gate
London
W11 3LB
Lettings
020 7792 0792

Energy Rating: F. We aim to make our particulars both accurate and reliable. However they are not guaranteed; nor do they form part of an offer or contract. If you require clarification on any points then please contact us, especially if you're traveling some distance to view. Please note that appliances and heating systems have not been tested and therefore no warranties can be given as to their good working order.

 **RICS** | Regulated
Estate Agent
and Letting Agent

[dexters.co.uk](https://www.dexters.co.uk)