



Kensington Park Road, W11

£1,383 Per week

A bright and spacious two bedroom apartment on the third floor of a portered building. The property has parquet flooring throughout, a renovated separate kitchen and access to Ladbroke Square communal gardens. This is the perfect home for a couple or a family wanting to live in Notting Hill.

Located on Kensington Park Road in the centre of Notting Hill. This apartment is a short distance to Notting Hill Gate, the famous Portobello Road and the cafés and bars of Westbourne Grove.

Features

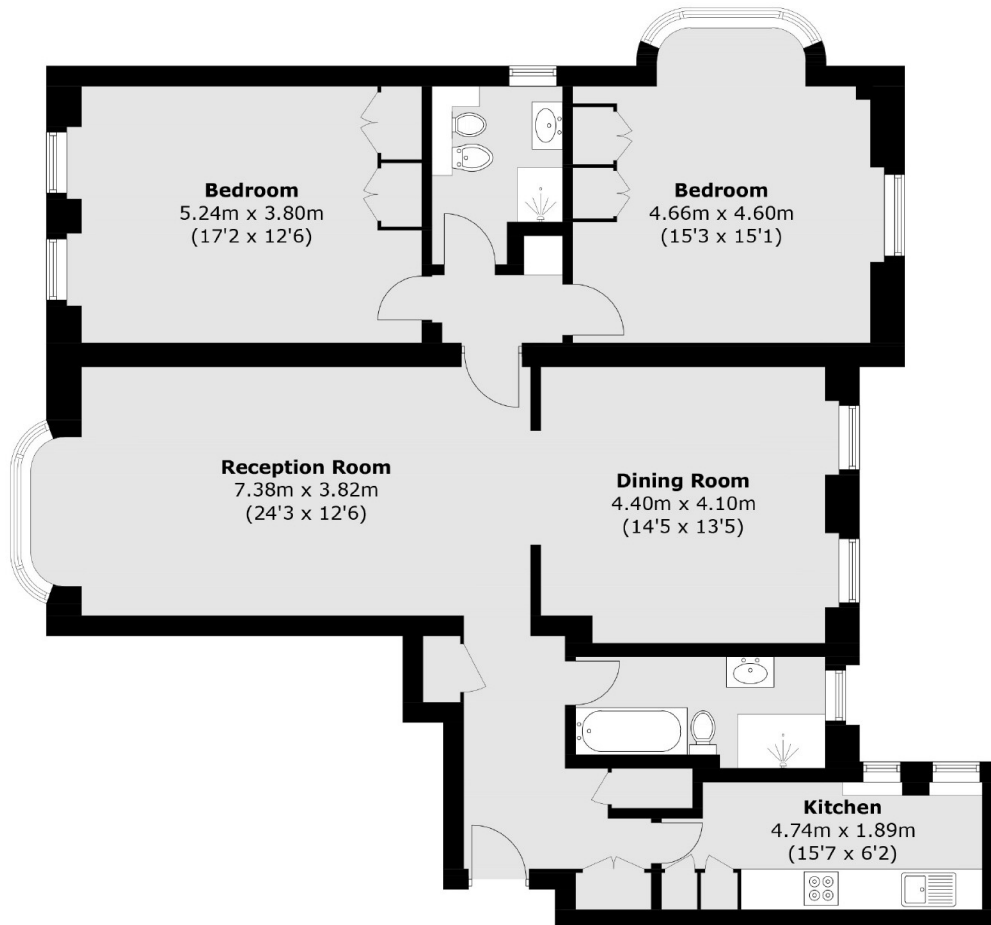
- Two Bedrooms
- Portered Development
- Lift Access
- High Ceilings
- Newly Refurbished
- Parquet Flooring



Kensington Park Road, W11



Kensington Park Road, London, W11



Third Floor

Total area (approx.): 120.5 sq. m (1,297.0 sq. ft)