



Woodsford Square, W14

£1,995 Per week

Dexters



Woodsford Square, W14

A impressive five double bedroom house arranged over four floors with a private garage and garden. The home offers plenty of living space, fantastic storage throughout and is ideal for large family as it's located within a quiet private community in Holland Park.

A peaceful private residential development situated in the heart of Holland Park. Ideally located just moments from both Holland Park and Holland Park tube station.

Features

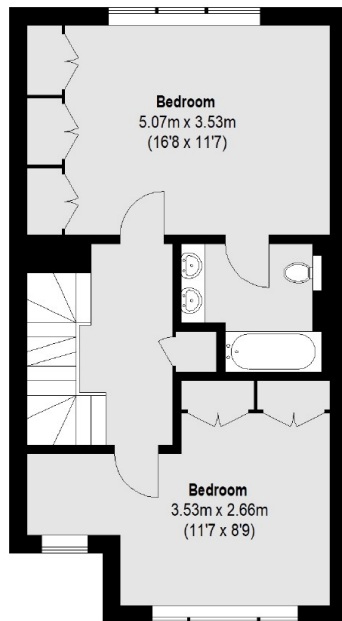
- Spacious House
- Five Bedrooms
- Separate Utility Room
- Garage
- Private Garden
- Holland Park Underground



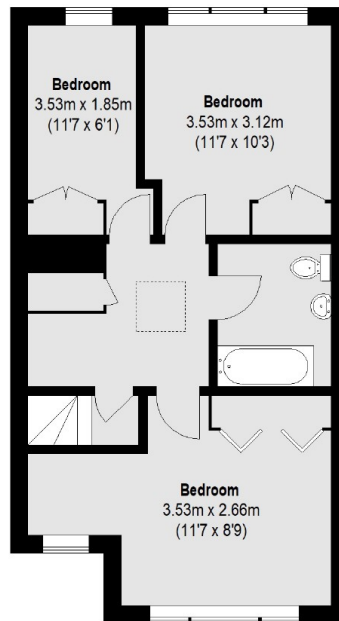




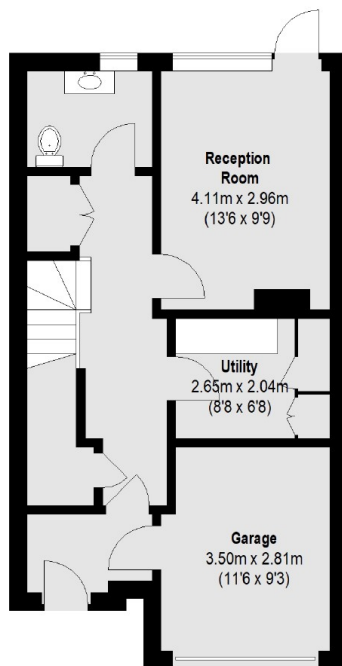
Woodsford Square, London, W14



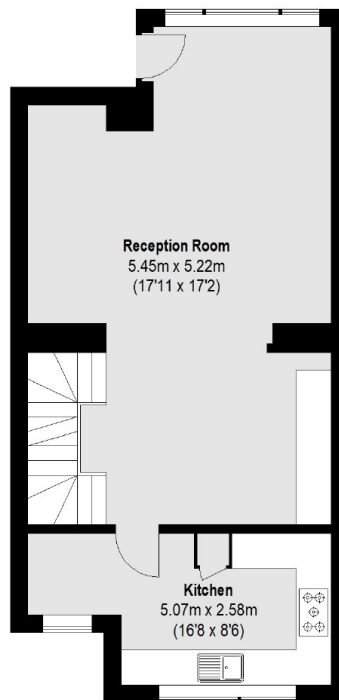
Second Floor



Third Floor



Ground Floor



First Floor

Total area (approx.): 199.20 sq. m (2144 Sq. ft) (Including Garage)

Dexters

Notting Hill
121-123 Notting Hill Gate
London
W11 3LB
Lettings
020 7792 0792

Energy Rating: C. We aim to make our particulars both accurate and reliable. However they are not guaranteed; nor do they form part of an offer or contract. If you require clarification on any points then please contact us, especially if you're traveling some distance to view. Please note that appliances and heating systems have not been tested and therefore no warranties can be given as to their good working order.

 **RICS** | Regulated
Estate Agent
and Letting Agent

[dexters.co.uk](https://www.dexters.co.uk)