



## Kensington Gardens Square, W2

£461 Per week

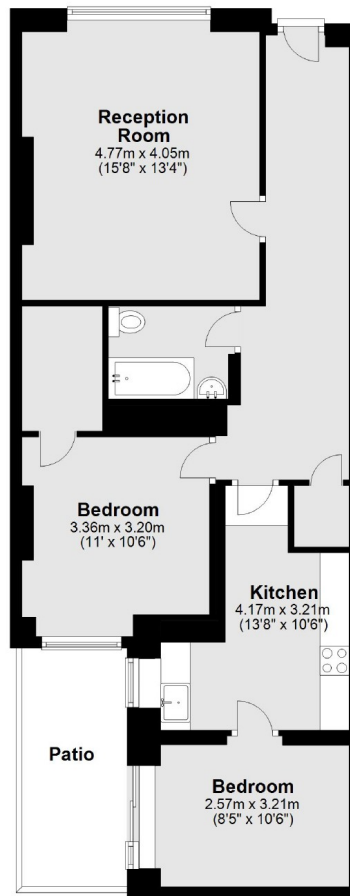
This large two double bedroom flat has just been decorated in a neutral colour throughout. The property has a separate kitchen, high ceilings and a private rear patio.

Conveniently located for the amenities of Queensway and Bayswater and is also close to Notting Hill Gate underground station. Ideally situated for the famous Portobello Road Market.

### Features

- Two Bedroom
- Lower Ground Floor
- Own Entrance
- Gas Hob
- Separate Kitchen
- Outside Space

# Kensington Gardens Square, London, W2



Total area: approx. 73.6 sq. metres (792.7 sq. feet)