



Moscow Road, W2

£1,153 Per week

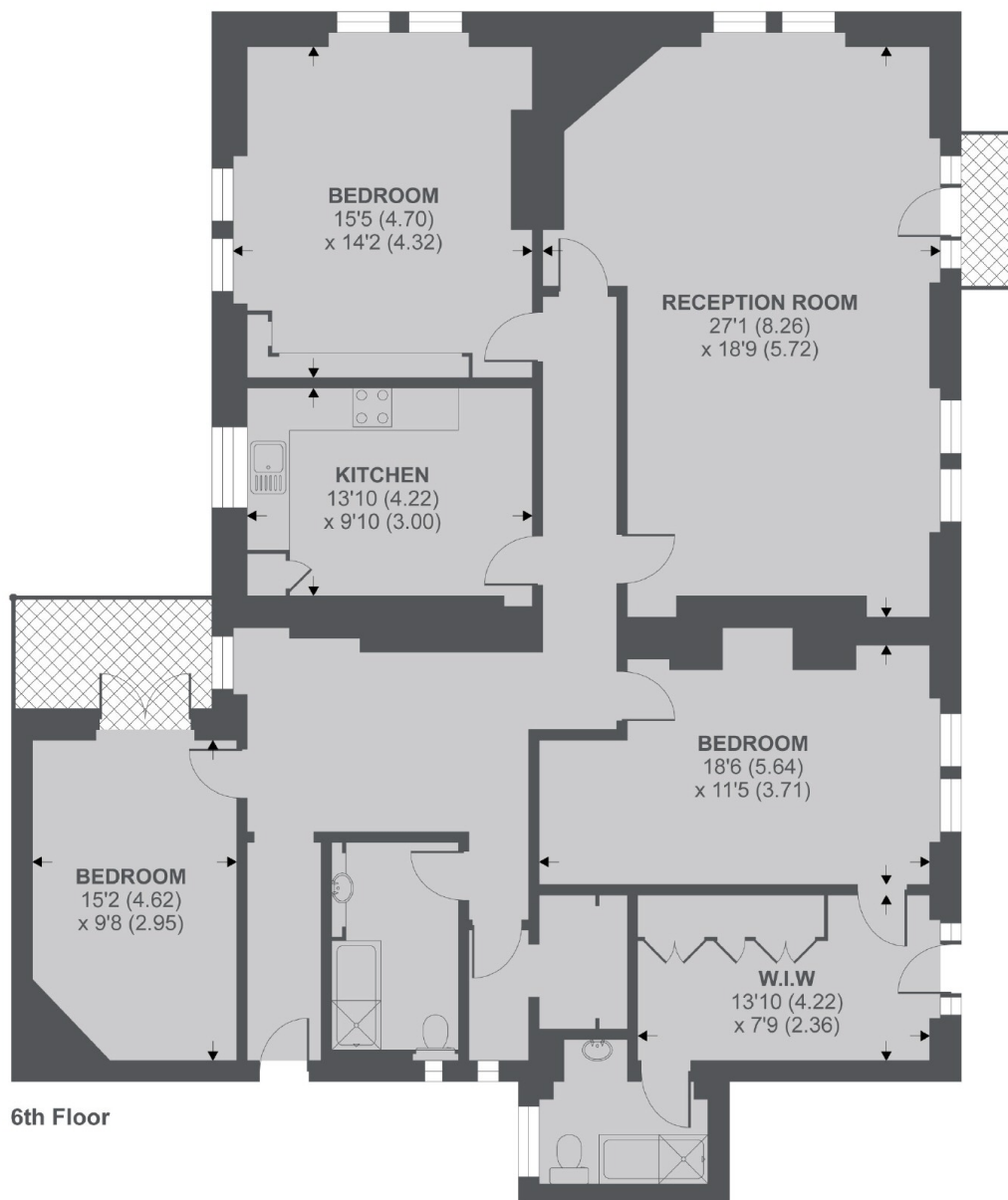
An impressive three double bedroom sixth floor apartment offering 1781 square feet of bright lateral living space including a walk in closet, two bathrooms and an eat-in kitchen.

Windsor Court is an impressive redbrick mansion block located on a quiet residential street nestled between Notting Hill Gate and Hyde Park, while Bayswater station and all the shops and restaurants of Queensway are only a short distance away.

Features

- Three Double Bedrooms
- Two Bathrooms
- Dressing Room
- Eat In Kitchen
- Lateral Apartment
- Lift Access
- Sixth Floor
- Huge Lateral Apartment
- 1781 Square Feet

Moscow Road, London, W2



6th Floor

APPROX FLOOR AREA 1781 SQ.FT 165.5 SQ.M

Copyright nichecom.co.uk 2019 REF : 473191

Dexters

Notting Hill
121-123 Notting Hill Gate
London
W11 3LB
Lettings
020 7792 0792

Energy Rating: D. We aim to make our particulars both accurate and reliable. However they are not guaranteed; nor do they form part of an offer or contract. If you require clarification on any points then please contact us, especially if you're traveling some distance to view. Please note that appliances and heating systems have not been tested and therefore no warranties can be given as to their good working order.

 **RICS** | Regulated
Estate Agent
and Letting Agent

dexters.co.uk