



## Arundel Gardens, W11

£830 Per week

This exceptionally large two bedroom apartment is situated on the raised ground floor, with wood flooring, a fully integrated open plan kitchen and reception room and plenty of storage throughout. This property also enjoys access to stunning private gardens.

This property is surrounded by shops, cafés, and cultural attractions. Hyde Park, Westfield Shopping Center, and all the amenities of Notting Hill are within walking distance. You'll have easy access to public transportation, just minutes away from both Ladbroke Grove and Notting Hill Gate station,

### Features

Two Bedroom  
Private Gardens  
Modern Interiors  
Open Plan Living



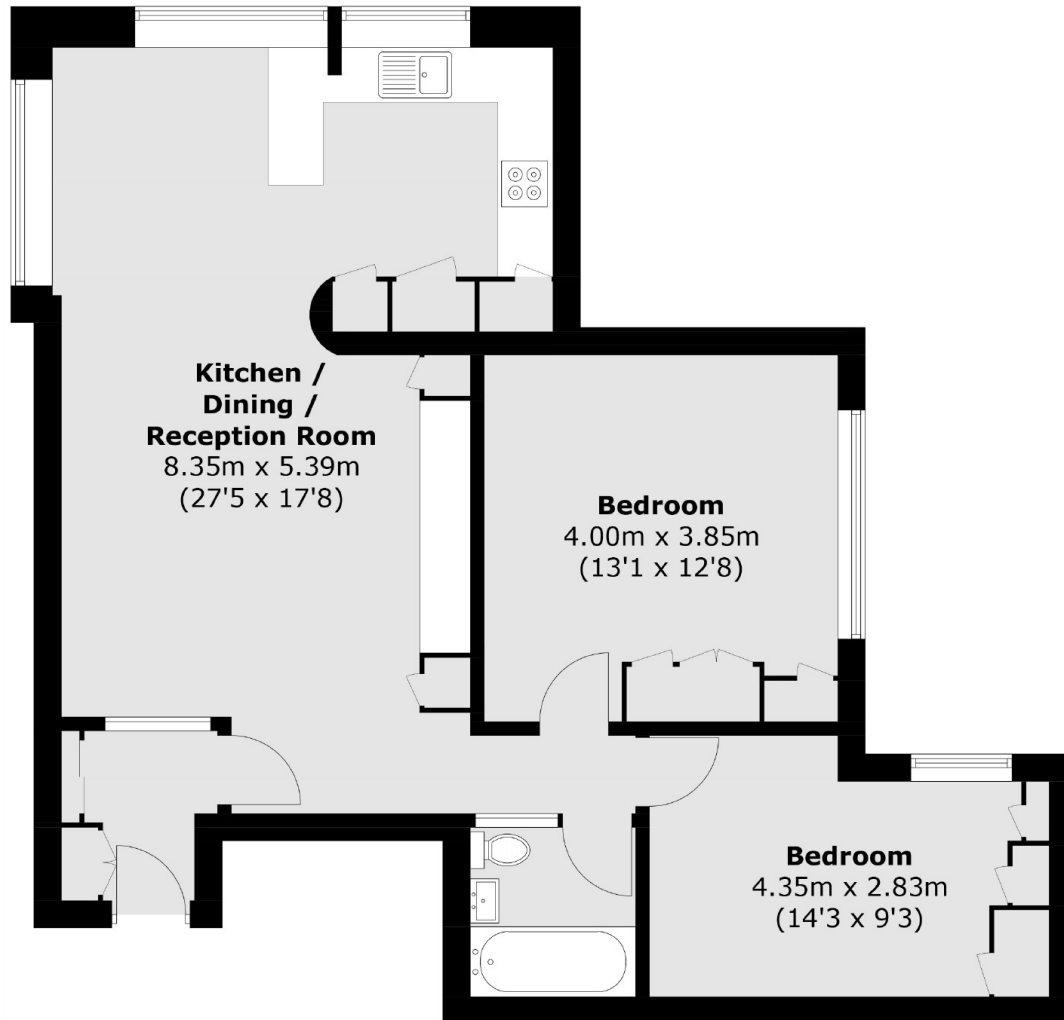


Arundel Gardens, W11





# Arundel Gardens, London, W11



Total area (approx.): 75.3 sq. m (810.5 sq. ft)

## Dexters

Notting Hill  
121-123 Notting Hill Gate  
London  
W11 3LB  
Lettings  
020 7792 0792

Energy Rating: . We aim to make our particulars both accurate and reliable. However they are not guaranteed; nor do they form part of an offer or contract. If you require clarification on any points then please contact us, especially if you're traveling some distance to view. Please note that appliances and heating systems have not been tested and therefore no warranties can be given as to their good working order.

 **RICS** | Regulated  
Estate Agent  
and Letting Agent

[dexters.co.uk](https://www.dexters.co.uk)