



Kensington Gardens Square, W2

£1,661 Per week

A luxury and contemporary two double bedroom, lateral apartment with a 900sq ft terrace situated on the second floor of this prestigious new development. Ideally located on Kensington Gardens Square, Notting Hill.

The development is conveniently located a few steps from the local shops and boutiques of Notting Hill. Bayswater Tube Station is 0.2 miles from the property whilst Queensway is 0.3 miles and Notting Hill Gate is 0.7 miles.

Features

- Miele Appliances
- Two lifts
- Cooling in all zones
- 24/7 porter
- Exclusive new build
- 7 Minute walk To Hyde Park
- Furniture pack can be purchased
- Underground parking included
- 900 Sq Ft Terrace

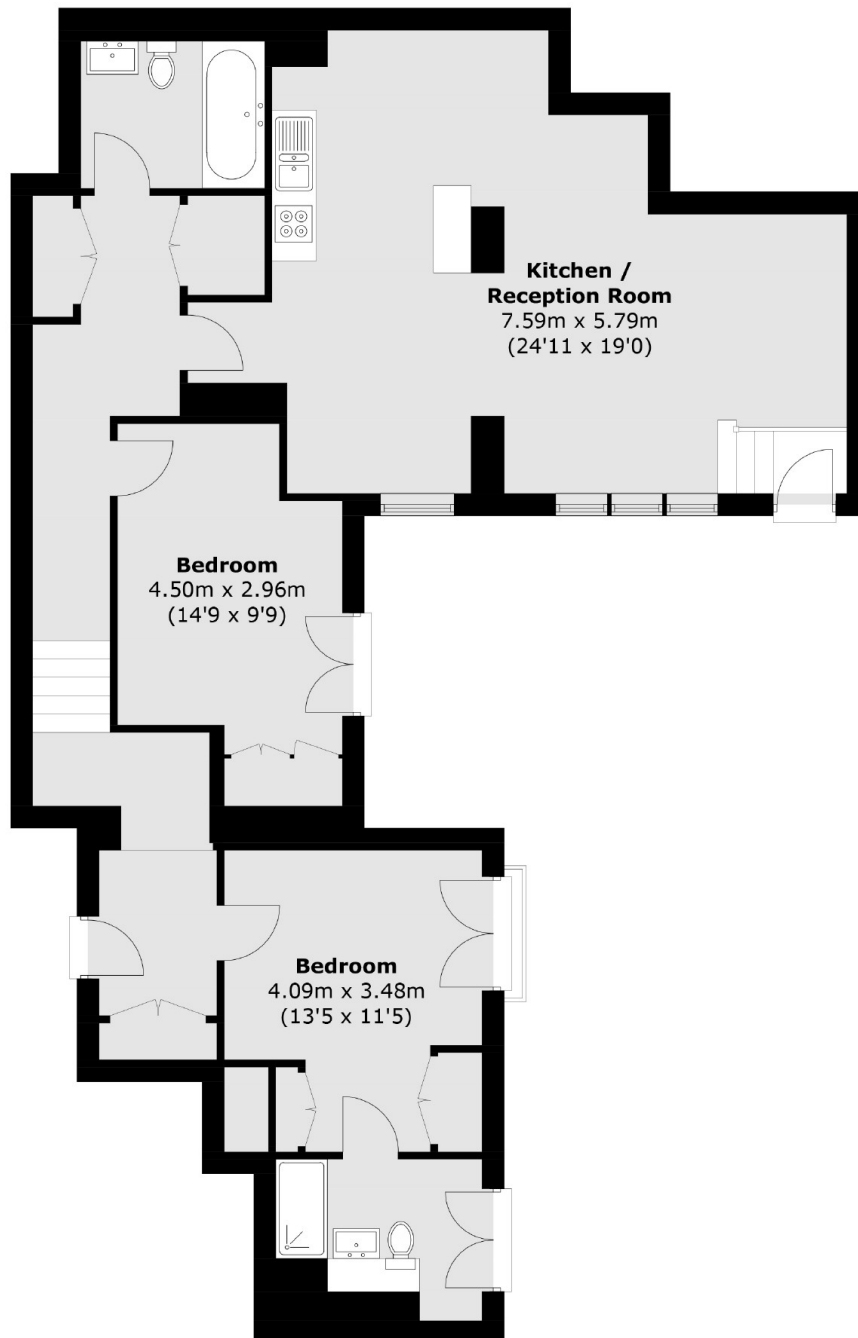


Kensington Gardens Square, W2

Miele Appliances, two lifts, Cooling in all zones, 24/7 porter, new build, 7 Minute Walk To Hyde Park, furniture package available at additional cost, underground parking included. Circa 1000 sqft private terrace.



Kensington Gardens Square, London, W2



Second Floor

Total area (approx.): 104.4 sq. m (1,123.9 sq. ft)

Dexters

Notting Hill
121-123 Notting Hill Gate
London
W11 3LB
Lettings
020 7792 0792

Energy Rating: B. We aim to make our particulars both accurate and reliable. However they are not guaranteed; nor do they form part of an offer or contract. If you require clarification on any points then please contact us, especially if you're traveling some distance to view. Please note that appliances and heating systems have not been tested and therefore no warranties can be given as to their good working order.

 **RICS** | Regulated
Estate Agent
and Letting Agent

[dexters.co.uk](https://www.dexters.co.uk)