

## Notting Hill Gate, W11

£530 Per week

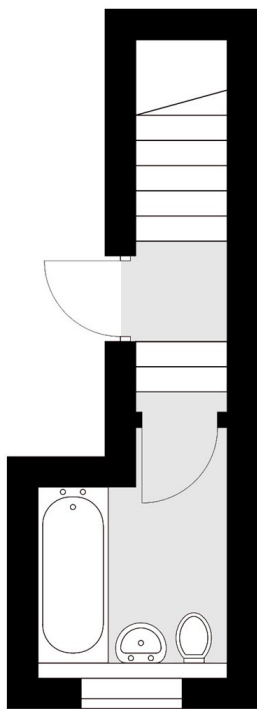
This beautifully presented, bright two-bedroom top-floor flat is set within an elegant period building. It features a spacious double bedroom and a versatile second bedroom, perfectly suited as a guest room or study.

Perfectly positioned in the heart of Notting Hill Gate, W11, the flat is surrounded by vibrant local amenities including cafés, boutique shops, and acclaimed restaurants. Excellent transport links are close by, with the Central, Circle, and District lines providing swift access across London. The area is also within easy reach of Kensington Gardens and Holland Park, offering beautiful green spaces to complement the lively neighbourhood.

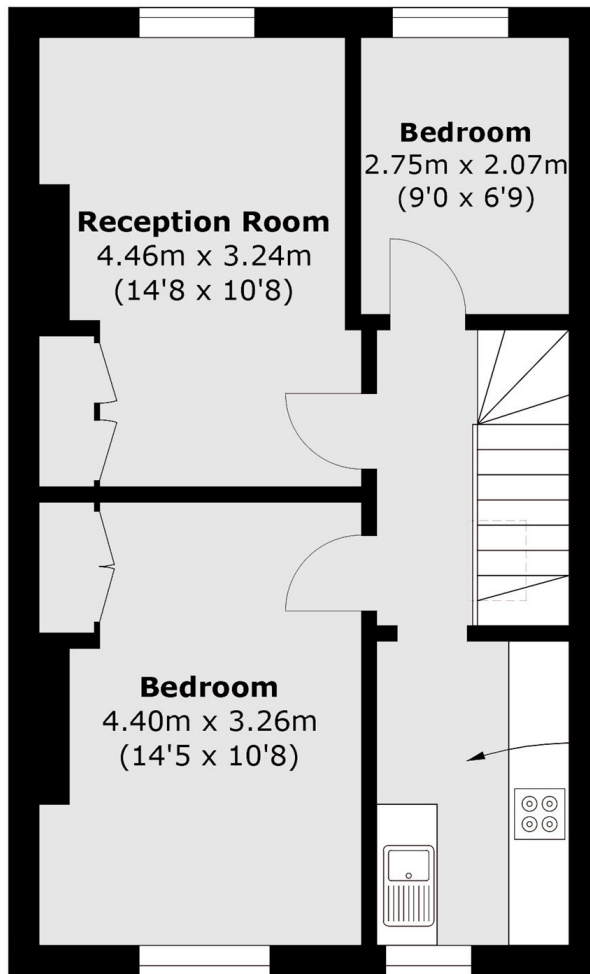
### Features

- Two Bedroom
- Top Floor
- Prime Location
- Separate Kitchen
- Notting Hill Gate Station
- One Bathroom

Notting Hill Gate,  
London, W11



**Second Floor**



**Third Floor**

Total area (approx.): 55.1 sq. m (594.0 sq. ft)