



Westbourne Park Road, W2

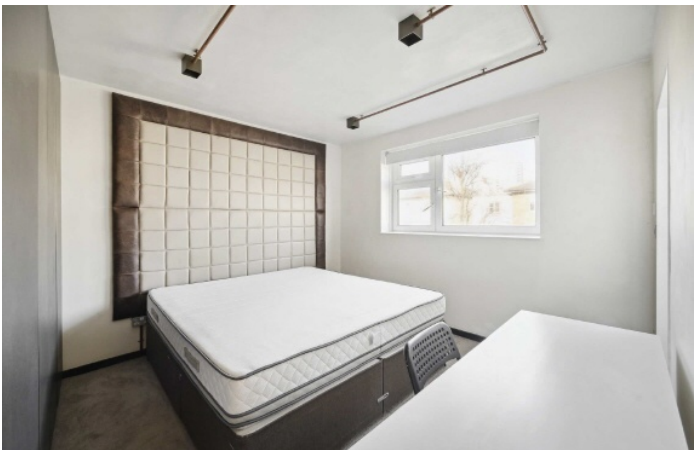
£900 Per week

A beautifully presented four bedroom, two bathroom apartment set on the second floor of a purpose-built development, finished to a high contemporary standard. The property holds a full HMO licence and is ideally suited to professional sharers. Further benefits include lift access, impressive high ceilings and a spacious eat-in kitchen, perfect for both modern living and entertaining.

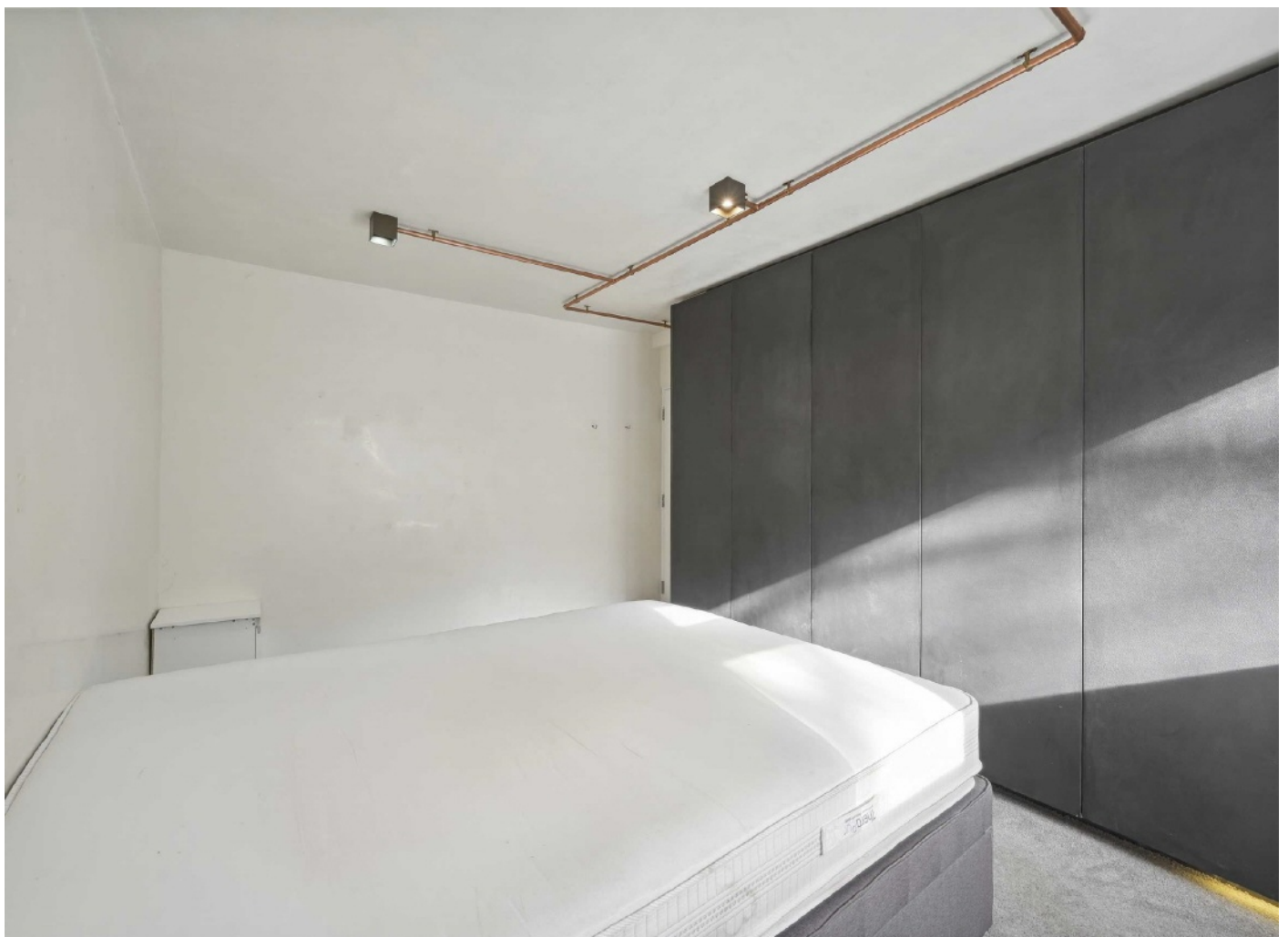
Ideally positioned on Westbourne Park Road, the property is moments from the popular restaurants, cafés and boutiques of Westbourne Grove, and within easy reach of Westbourne Park Underground Station for excellent transport links.

Features

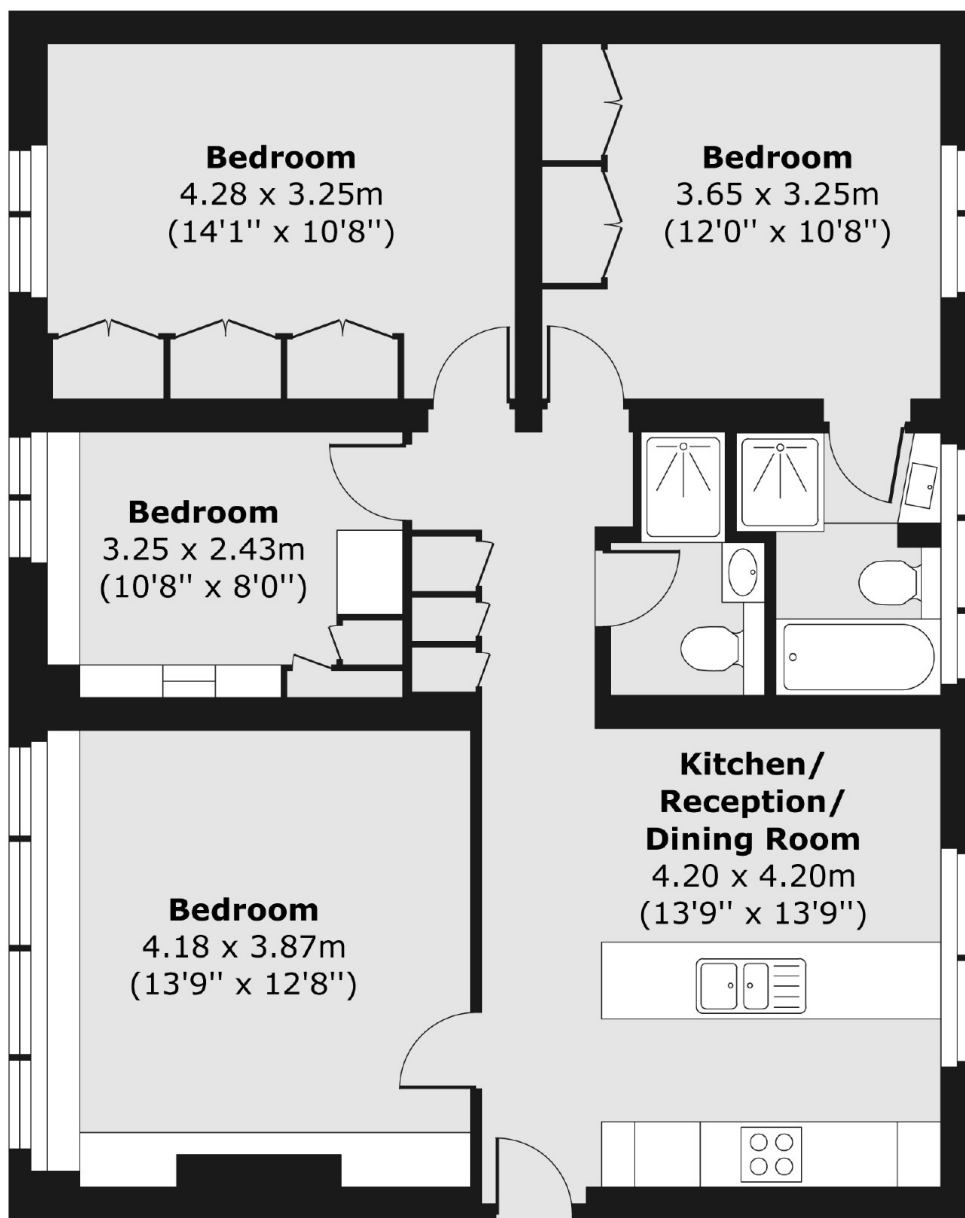
- Four Bedrooms
- Two Bathroom
- Suitable For Sharers
- Full HMO Licence
- Second Floor Flat
- Newly Refurbished
- Lift Access
- High Specification
- Ample Storage



Westbourne Park Road, W2



Westbourne Park Road, London, W2



Total area (approx.) 85.60 sq. m (921 sq. ft)