



Ladbroke Grove, W11

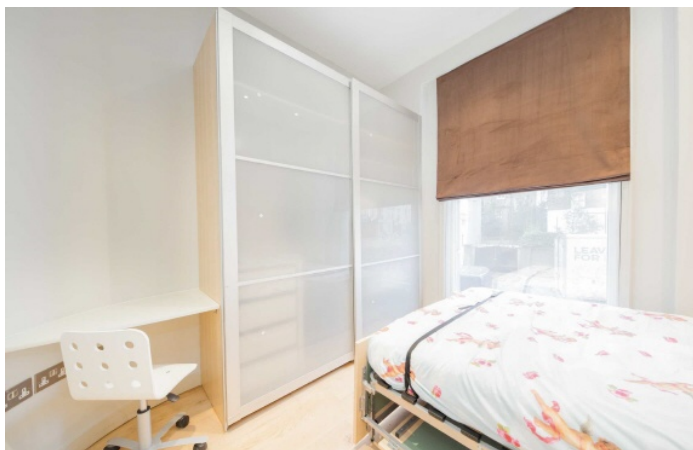
£565 Per week

A well presented one double bedroom apartment ideally positioned on the raised ground floor of a well maintained period conversion, with wood flooring, high ceilings and plenty of storage throughout.

Located near restaurants and cafés of Notting Hill and near to Ladbroke Grove underground station, providing valuable transport links into the city.

Features

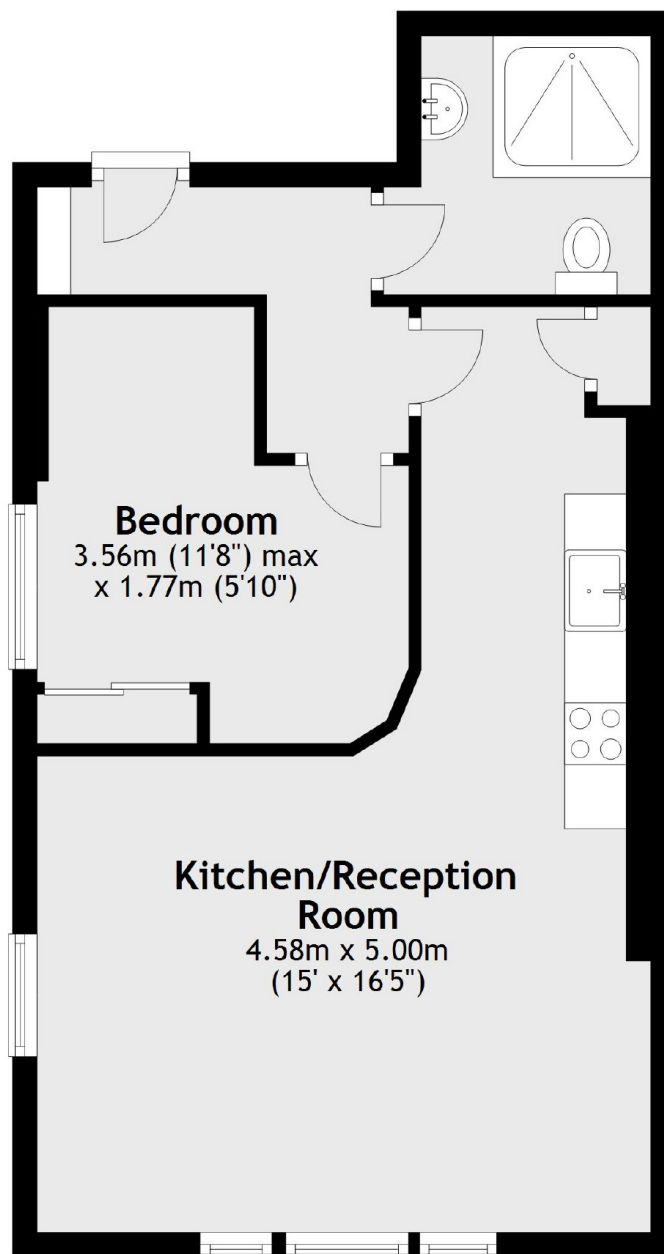
- One Bedroom Apartment
- Raised Ground Floor
- Abundance of Natural Light
- Wood Floors
- Plenty Of Storage
- Integrated Appliances
- Modern Appliances



Ladbroke Grove, W11



Ladbroke Grove, London, W11



Total area: approx. 44.8 sq. metres (482.5 sq. feet)