



Ashley Gardens, SW1P

£1,730 Per week

An elegant, purpose-built Victorian Mansion flat in the heart of Westminster. This grand and impressive 1890's development is within the Westminster Cathedral Conservation Area.

The flat is located adjacent to Westminster Cathedral and a short walk to Victoria Station along with the amenities of Victoria Street. The green spaces of St James's Park are within easy reach.

Features

Spacious
Bright
Balcony
Porter
Original Features
Centrally Located



Ashley Gardens, SW1P

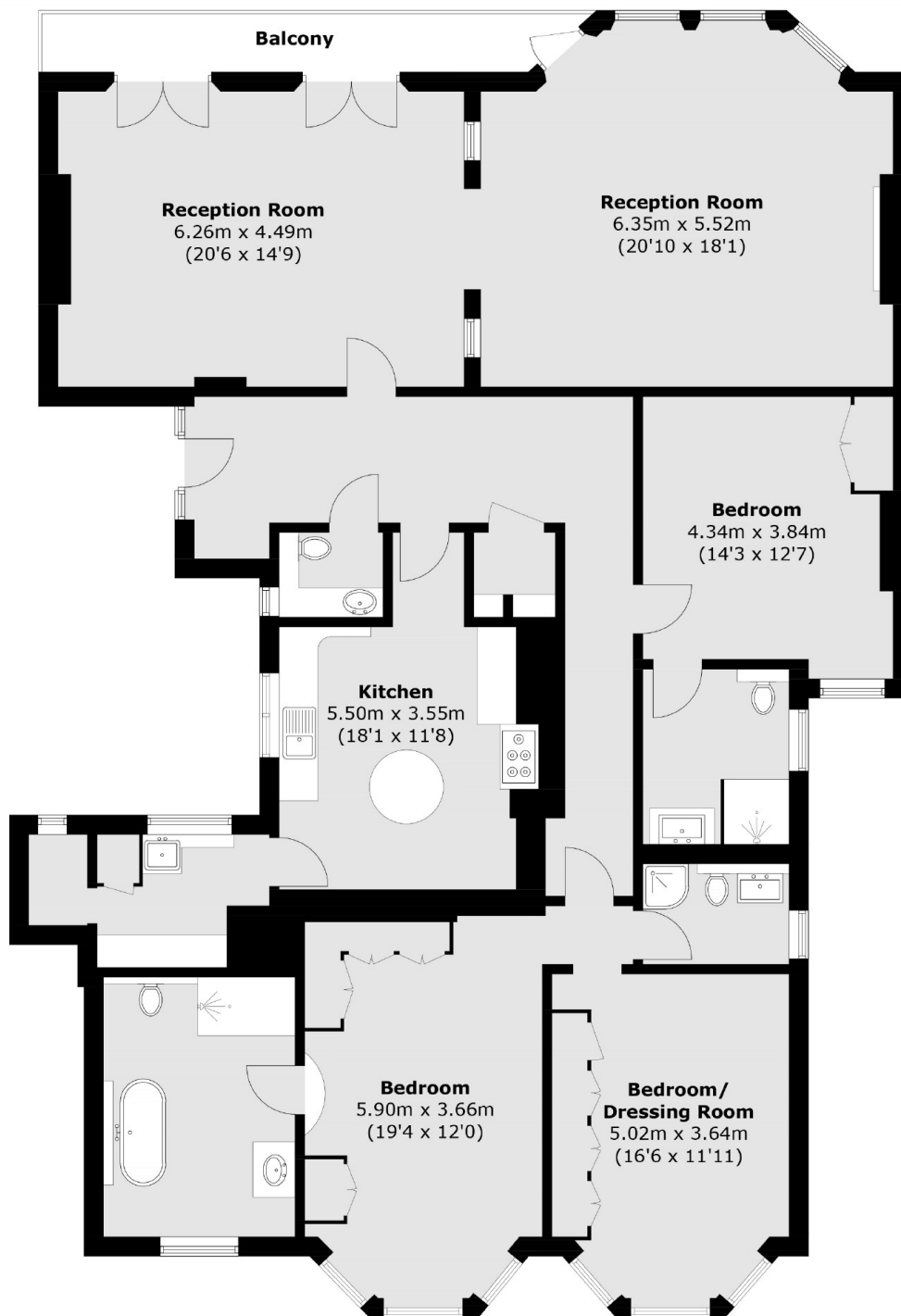
An elegant beautifully finished three bedroom lateral apartment offering well appointed large original rooms, an abundance of period features and exciting views.

The property is situated on the Fourth floor of a prestigious mansion building in one of Westminster's finest residential areas.

The accommodation comprises an impressive entrance hall with the original tile flooring, two original reception rooms opening onto balcony and large kitchen finished to high specification. The guest bedroom includes an en-suite, there are two further double bedrooms and a separate family bathroom. The property offers plenty of built in wardrobes throughout and 24 hour portage.



Ashley Gardens, London, SW1P



Total area (approx.): 200.4 sq. m (2157.1 sq. ft)
Balcony: 7.2 sq. m (77.5 sq. ft)

Dexters

Pimlico
42 Denbigh Street
London
SW1V 2ER
Lettings
020 7976 5200

Energy Rating: C. We aim to make our particulars both accurate and reliable. However they are not guaranteed; nor do they form part of an offer or contract. If you require clarification on any points then please contact us, especially if you're traveling some distance to view. Please note that appliances and heating systems have not been tested and therefore no warranties can be given as to their good working order.

 **RICS** | Regulated
Estate Agent
and Letting Agent

dexters.co.uk