



Ashley Gardens, SW1P

£1,615 Per week

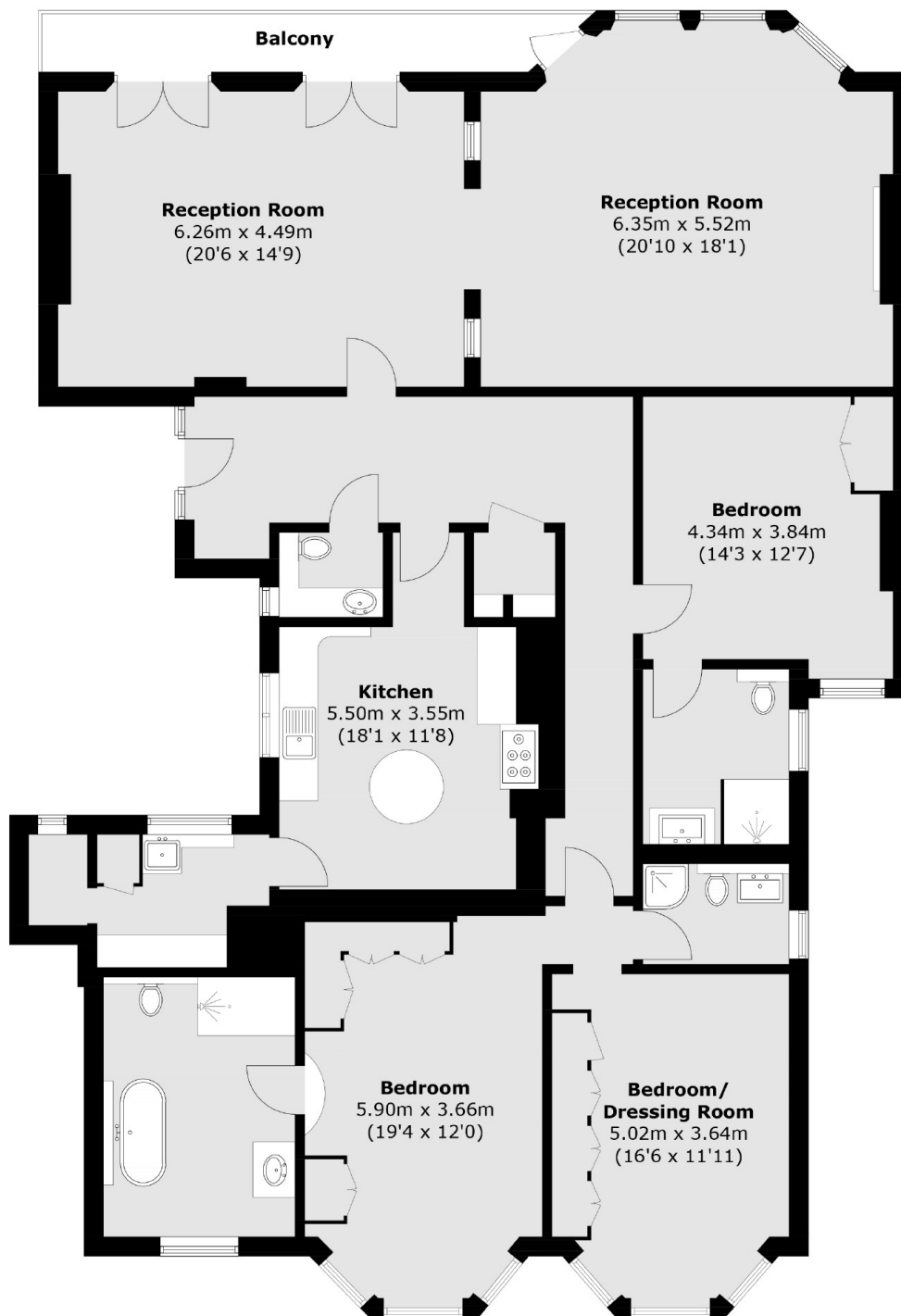
An elegant, purpose-built Victorian Mansion flat in the heart of Westminster. This grand and impressive 1890's development is within the Westminster Cathedral Conservation Area.

The flat is located adjacent to Westminster Cathedral and a short walk to Victoria Station along with the amenities of Victoria Street. The green spaces of St James's Park are within easy reach.

Features

- Spacious
- Bright
- Balcony
- Porter
- Original Features
- Centrally Located

Ashley Gardens, London, SW1P



Total area (approx.): 200.4 sq. m (2157.1 sq. ft)
Balcony: 7.2 sq. m (77.5 sq. ft)

Dexters

Pimlico
42 Denbigh Street
London
SW1V 2ER
Lettings
020 7976 5200

Energy Rating: C. We aim to make our particulars both accurate and reliable. However they are not guaranteed; nor do they form part of an offer or contract. If you require clarification on any points then please contact us, especially if you're traveling some distance to view. Please note that appliances and heating systems have not been tested and therefore no warranties can be given as to their good working order.

 **RICS** | Regulated
Estate Agent
and Letting Agent

[dexters.co.uk](https://www.dexters.co.uk)