



## Wilton Road, SW1V

£800 Per week

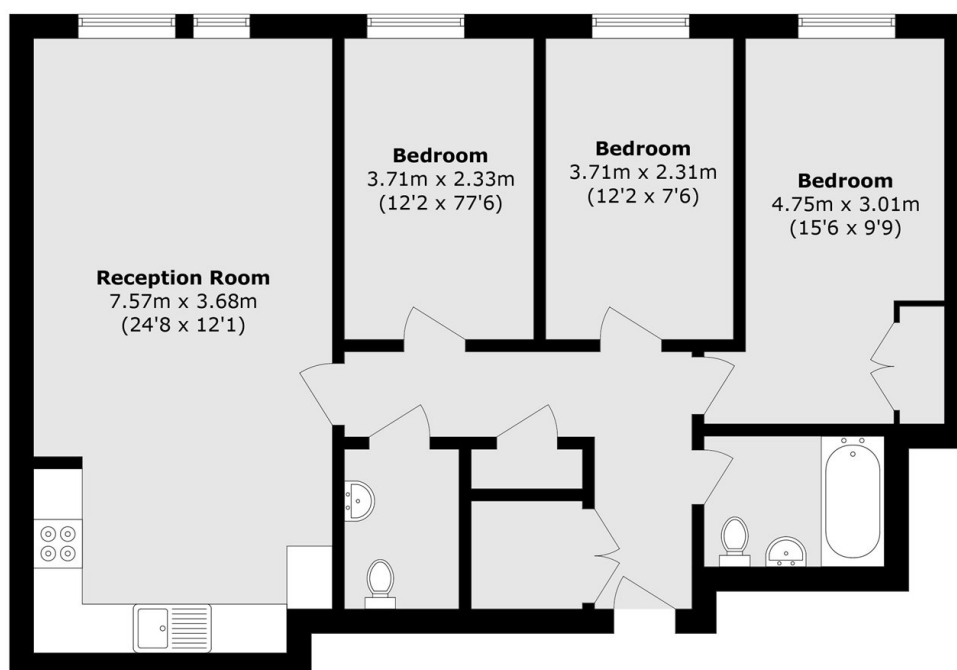
A well-proportioned three-bedroom apartment located on the fifth floor of a modern building with lift access, in the heart of Victoria.

Barrington Court's prime location is nearby coffee shops and restaurants as well as to some of London's most iconic landmarks, including Buckingham Palace, Westminster Cathedral, and the Houses of Parliament.

### Features

- Three Bedrooms
- Spacious
- Centrally Located
- Purpose Built Building
- Lift
- Open Plan Kitchen

Wilton Road,  
London, SW1V



Total area (approx.): 77.6 sq. m (835.3 sq. ft)