

## Gloucester Street, SW1V

£634 Per week

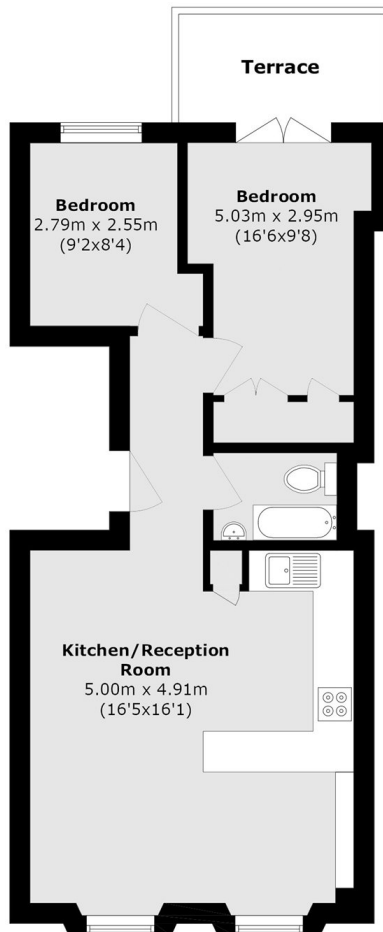
A very smart two bedroom flat arranged over the third floor of a Victorian conversion with a lift and access to a private balcony.

Gloucester Street ideally located in the Pimlico Grid and is close to both Wilton Road and Warwick Way with a wide choice of both boutique and chain cafes and shops.

### Features

Two Bedroom  
Third Floor  
Lift Access  
Balcony  
Wood Floors  
Open Plan

Gloucester Street,  
London, SW1V



Total area (approx.): 48.5 sq. m (522.1 sq. ft)

Terrace area (approx.): 4.9 sq. m (52.7 sq. ft)

**Dexters**

Pimlico  
42 Denbigh Street  
London  
SW1V 2ER  
Lettings  
020 7976 5200

Energy Rating: C. We aim to make our particulars both accurate and reliable. However they are not guaranteed; nor do they form part of an offer or contract. If you require clarification on any points then please contact us, especially if you're traveling some distance to view. Please note that appliances and heating systems have not been tested and therefore no warranties can be given as to their good working order.

 **RICS** | Regulated  
Estate Agent  
and Letting Agent

[dexters.co.uk](https://www.dexters.co.uk)