

Churchill Gardens, SW1V

£540 Per week

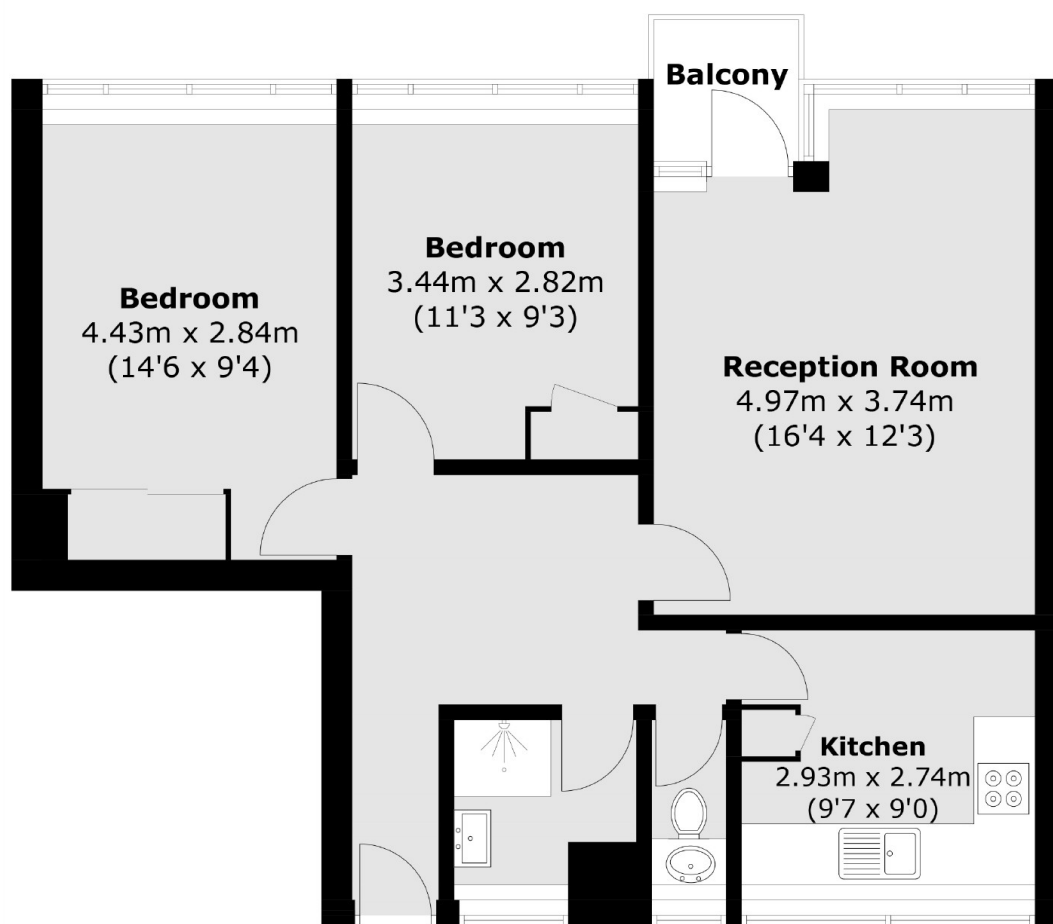
A modern two double bedroom apartment on the seventh floor with river views. Spacious reception room with wood floors and balcony, separate modern kitchen, two good size double bedrooms and bathroom. An ideal home for two professional sharers, a couple or a small family.

Churchill Gardens is a conservation area, Bramwell House is a listed building and is kept in very good condition. It is only a short walk to the shopping areas in Pimlico, Sloane Square and Victoria, as well as being in a great position by the river. The closest station is Pimlico.

Features

- Modern Apartment
- Two Double Bedrooms
- Seventh Floor Via Lift
- Balcony Overlooking River
- Wood Floors in Reception
- Good Storage

Churchill Gardens, London, SW1V



Total area (approx.): 64.2 sq. m (691.0 sq. ft)
Balcony area: 2.0 sq. m (21.5 sq. ft)