



Gloucester Street, SW1V

£807 Per week

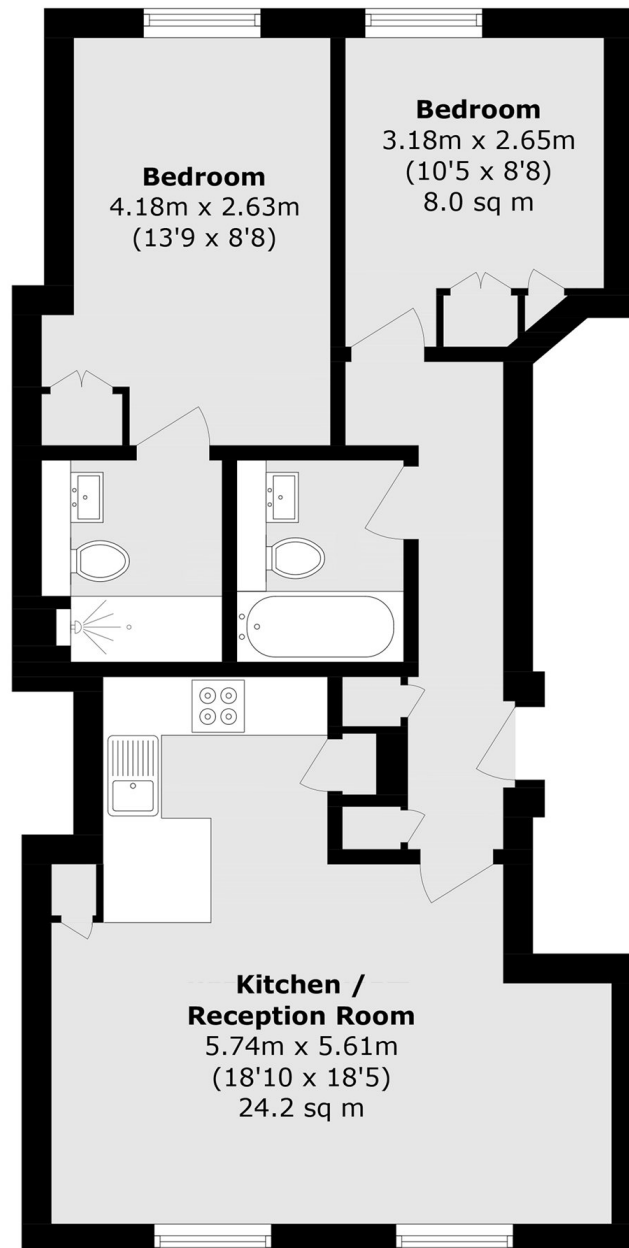
A smart two-bedroom, two-bathroom apartment arranged over the second floor of a Georgian conversion, with lift access and a porter. This property has been designed and refurbished to a high standard and further benefits include secure underground parking and on-site car wash facilities, both available at an additional cost.

Located on the sought-after Pimlico Grid, the property is ideally positioned within easy reach of the amenities along Churton Street and Warwick Way, offering a variety of independent cafés, delis, and local shops. Closest undergrounds are Victoria and Pimlico, offering convenient access across London.

Features

- Two Bedrooms
- Two Bathrooms
- Residential Porter
- Built-in Storage
- High Ceilings
- Separate Private Parking

Gloucester Street,
London, SW1V



Total area (approx.): 60.6 sq. m (652.2 sq. ft)

Dexters

Pimlico
42 Denbigh Street
London
SW1V 2ER
Lettings
020 7976 5200

Energy Rating: E. We aim to make our particulars both accurate and reliable. However they are not guaranteed; nor do they form part of an offer or contract. If you require clarification on any points then please contact us, especially if you're traveling some distance to view. Please note that appliances and heating systems have not been tested and therefore no warranties can be given as to their good working order.

 **RICS** | Regulated
Estate Agent
and Letting Agent

[dexters.co.uk](https://www.dexters.co.uk)