



Page Street, SW1P

£550 Per week

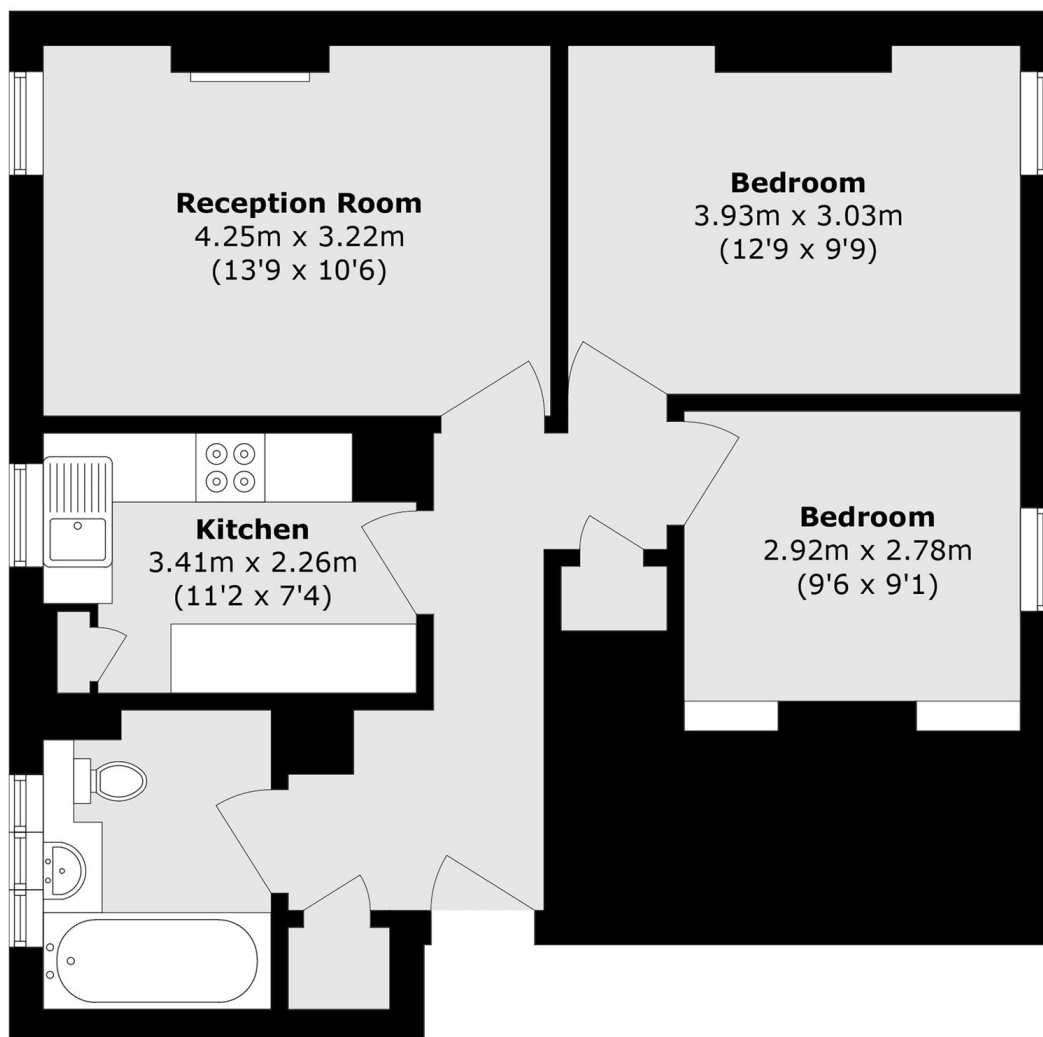
This well-arranged two-bedroom apartment is situated on the third floor of a well-maintained building and is presented in good condition, featuring period characteristics and a separate kitchen.

Page Street is located in the Heart of Westminster and close to all the amenities of Victoria Street. Transportation is provided via Victoria (Victoria, Circle, District and Mainline Services) Pimlico (Victoria) and St James's Park (Circle and District).

Features

- Central Westminster Location
- Gated Development
- Separate Kitchen
- Two Bedrooms
- Second Floor

Page Street,
London, SW1P



Total area (approx.): 58.9 sq. m (633.9 sq. ft)

Dexters

Pimlico
42 Denbigh Street
London
SW1V 2ER
Lettings
020 7976 5200

Energy Rating: . We aim to make our particulars both accurate and reliable. However they are not guaranteed; nor do they form part of an offer or contract. If you require clarification on any points then please contact us, especially if you're traveling some distance to view. Please note that appliances and heating systems have not been tested and therefore no warranties can be given as to their good working order.

 **RICS** | Regulated
Estate Agent
and Letting Agent

[dexters.co.uk](https://www.dexters.co.uk)