



## Belgrave Road, SW1V

£525 Per week

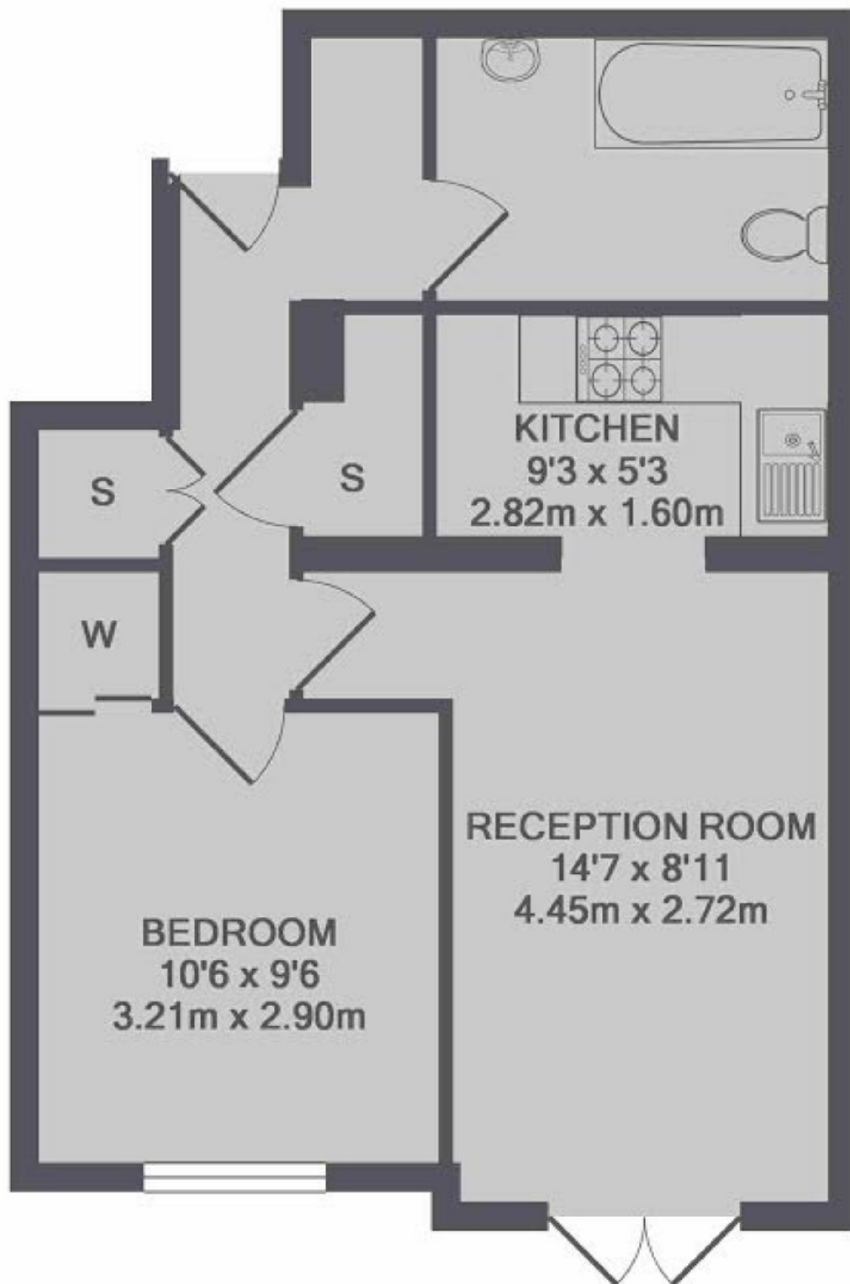
A one double bedroom apartment with private garden in Pimlico. Reception room leads to a private patio garden, modern open plan kitchen, double bedroom and modern bathroom. An ideal home for a single professional or a couple.

The apartment is in the middle of Belgrave Road meaning residents are surrounded by the boutique cafés and restaurants of the Popular Pimlico grid and supermarkets on Warwick Way.

### Features

- One Double Bedroom
- Modern Interior
- Private Patio Garden
- Open Plan Kitchen
- Close to Tube
- Furnished

Belgrave Road,  
London, SW1V



TOTAL APPROX. FLOOR AREA 444 SQ.FT. (41.3 SQ.M.)

**Dexters**

Pimlico  
42 Denbigh Street  
London  
SW1V 2ER  
Lettings  
020 7976 5200

Energy Rating: C. We aim to make our particulars both accurate and reliable. However they are not guaranteed; nor do they form part of an offer or contract. If you require clarification on any points then please contact us, especially if you're traveling some distance to view. Please note that appliances and heating systems have not been tested and therefore no warranties can be given as to their good working order.

 **RICS** | Regulated  
Estate Agent  
and Letting Agent

[dexters.co.uk](https://www.dexters.co.uk)