

Collingham Gardens, SW5

£550,000

Nestled on a picturesque, tree-lined street just moments from Gloucester Road tube station, this delightful one-bedroom apartment offers both comfort and convenience.

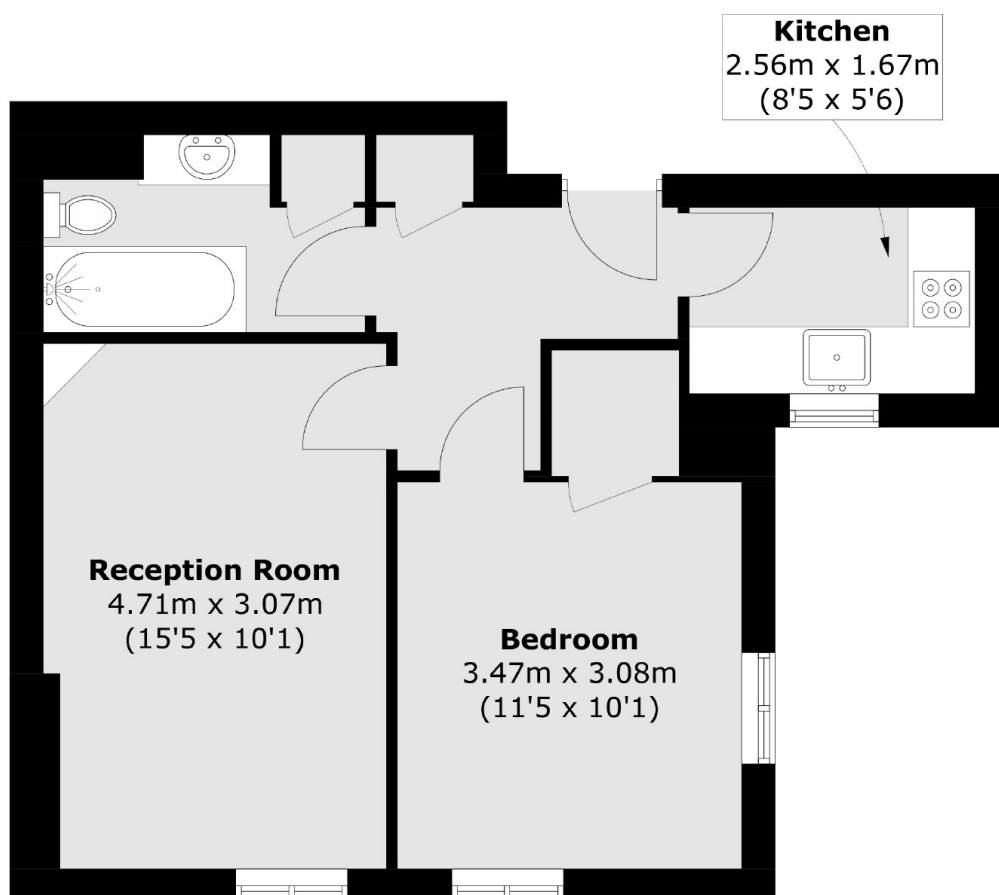
Collingham Gardens is located next to Bramham Gardens and is in close proximity to the shopping and entertainment amenities of the Old Brompton Road, Gloucester Road and Earls Court.

Features

- One Bedroom
- One Bathroom
- High Ceilings
- Seperate Kitchen
- Naturally Light

No Ongoing Chain

Collingham Gardens, London, SW5



Second Floor

Total area (approx.): 43.1 sq. m (463.7 sq. ft)

Dexters

South Kensington
144 Old Brompton Road
London
SW7 4NR
Sales
0207 838 0108

Energy Rating: . We aim to make our particulars both accurate and reliable. However they are not guaranteed; nor do they form part of an offer or contract. If you require clarification on any points then please contact us, especially if you're traveling some distance to view. Please note that appliances and heating systems have not been tested and therefore no warranties can be given as to their good working order.

 **RICS** | Regulated
Estate Agent
and Letting Agent

dexters.co.uk