



Courtfield Gardens, SW5

£1,195 Per week

Dexters



Courtfield Gardens, SW5

This apartment is ideally suited for a professional tenant seeking residence in one of the most prestigious garden squares in South Kensington. The property is arranged over the first and second floors.

The property is situated over the first and second floors of a period conversion in one of the most esteemed squares in the area. It features high ceilings and ample natural light streaming through large sash windows. The living space boasts elegant wood flooring throughout, complemented by a balcony that extends along the side of the apartment.

The open-plan kitchen is equipped with all necessary appliances and has recently undergone renovation. Both bedrooms are generously sized, offering ample space for designer wardrobes. The bathrooms have also been recently renovated.

The property is conveniently located near Gloucester Road, offering a wide selection of restaurants and shops, including Waitrose supermarket, Boots chemist, and Pret coffee shop.

Features

- 2 Bedrooms
- 2 Bathrooms
- High Ceilings
- Private Outside Space
- Communal Gardens
- First & Second Floor

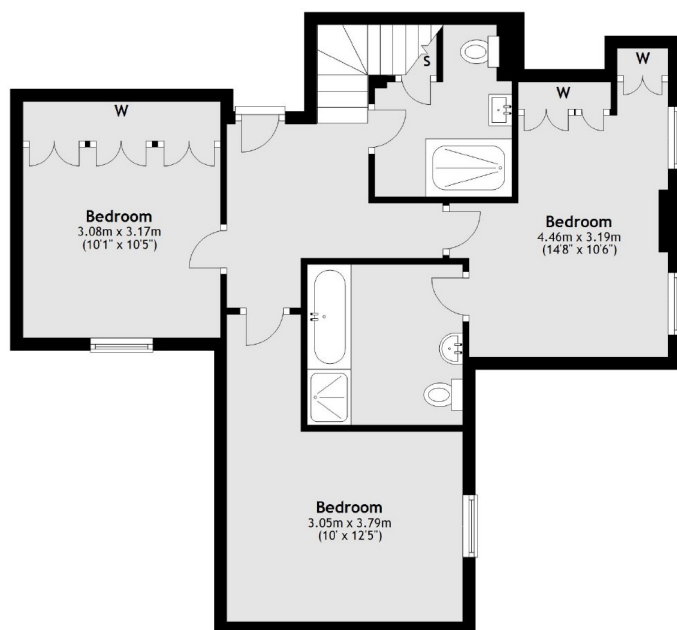




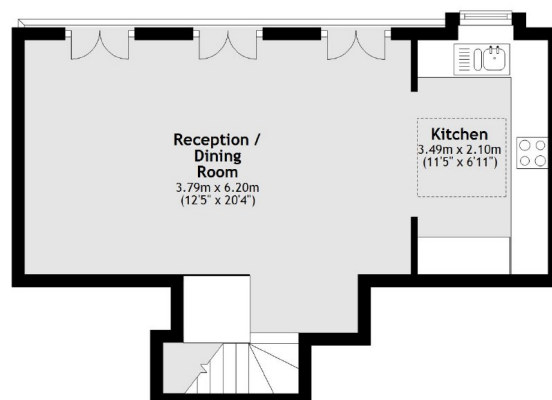


Courtfield Gardens, London, SW5

Fourth Floor



Fifth Floor



Main area: Approx. 98.7 sq. metres (1062.1 sq. feet)
Plus balconies, approx. 0.9 sq. metres (10.1 sq. feet)