



## Cornwall Gardens, SW7

£2,350,000

Set within a handsome Victorian period conversion on the prestigious Cornwall Gardens, this beautifully presented maisonette offers a rare combination of space, charm, and privacy.

Located moments from the amenities and transport links of Gloucester Road and South Kensington, this charming home also offers access to the stunning Cornwall Gardens, one of London's most desirable communal garden squares.

### Features

- Highly Sought After Location
- No Ongoing Chain
- Private Outdoor Area
- Access To Communal Gardens
- Three Double Bedrooms
- High Ceilings
- Abundance Of Natural Light





## Cornwall Gardens, SW7

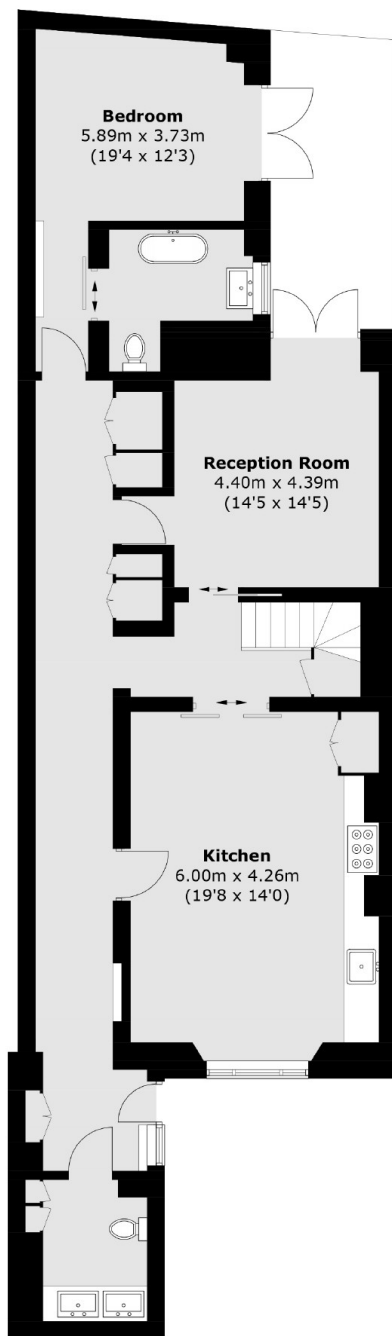
Arranged over the ground and lower ground floors, the property features its own private entrance and a thoughtful split-level layout, ideal for both entertaining and family living.

The apartment boasts three generously sized double bedrooms, including a tranquil principal suite at the rear of the property with direct access to a private patio.

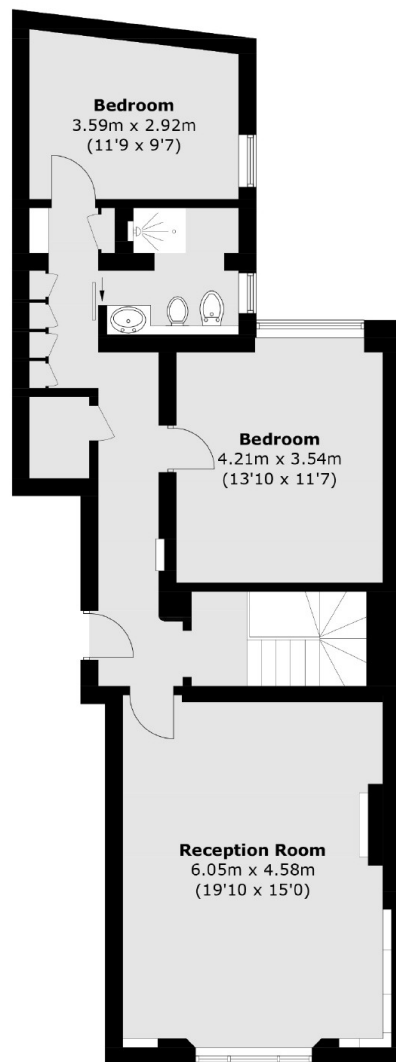




# Cornwall Gardens, London, SW7



**Basement**



**Ground Floor**

Total area (approx.): 179.6 sq. m (1,933.2 sq. ft)  
(Including Basement)