



Courtfield Road, SW7

£807 Per week

**Dexters**



## Courtfield Road, SW7

This newly refurbished and generously proportioned split-level maisonette is arranged over the ground and lower ground floors of an elegant period building. Comprising two well-appointed double bedrooms, the property offers a spacious, separate kitchen and dedicated entertaining area. Further benefits include its own private entrance, enhancing both privacy and convenience.

Ideally positioned just moments from Gloucester Road, the property enjoys easy access to a vibrant array of cafés, boutique shops, and acclaimed restaurants. Local amenities include a Waitrose supermarket, Boots chemist, Prêt coffee shop, and the popular Black & Blue steakhouse. Excellent transport links are provided by Gloucester Road Underground Station, offering swift connections across London.

### Features

- Two Bedroom
- Ample Storage
- Split Level
- Excellent Location
- High Ceilings
- Own Entrance





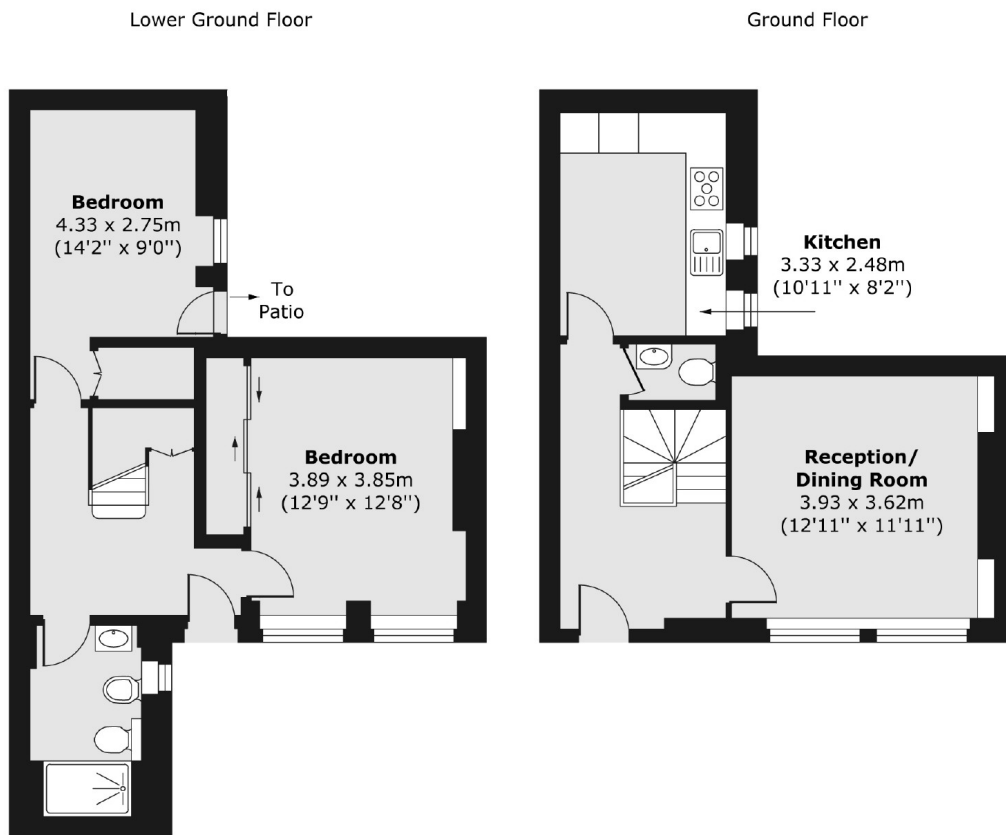








# Courtfield Road, London, SW7



Total area (approx.) 73.13 sq. m (787 sq. ft)

## Dexters

South Kensington  
144 Old Brompton Road  
London  
SW7 4NR  
Lettings  
020 7244 7711

Energy Rating: D. We aim to make our particulars both accurate and reliable. However they are not guaranteed; nor do they form part of an offer or contract. If you require clarification on any points then please contact us, especially if you're traveling some distance to view. Please note that appliances and heating systems have not been tested and therefore no warranties can be given as to their good working order.

 **RICS** | Regulated  
Estate Agent  
and Letting Agent

[dexters.co.uk](https://www.dexters.co.uk)