



Brechin Place, SW7

£1,400,000

Situated on the second floor of a handsome redbrick period building on the sought-after Brechin Place, this bright and spacious three bedroom flat offers an exceptional opportunity to live in one of South Kensington's most desirable residential streets.

Brechin Place is situated a short walk from both South Kensington and Gloucester Road Underground stations. This area offers a wide range of excellent shops, restaurants and cafés as well as having excellent road access in and out of central London.

Features

- Three Bedroom Flat
- Two Bathrooms
- Second Floor
- Highly Sought After Location
- Walking Distance To Amenities
- Gloucester Road Station



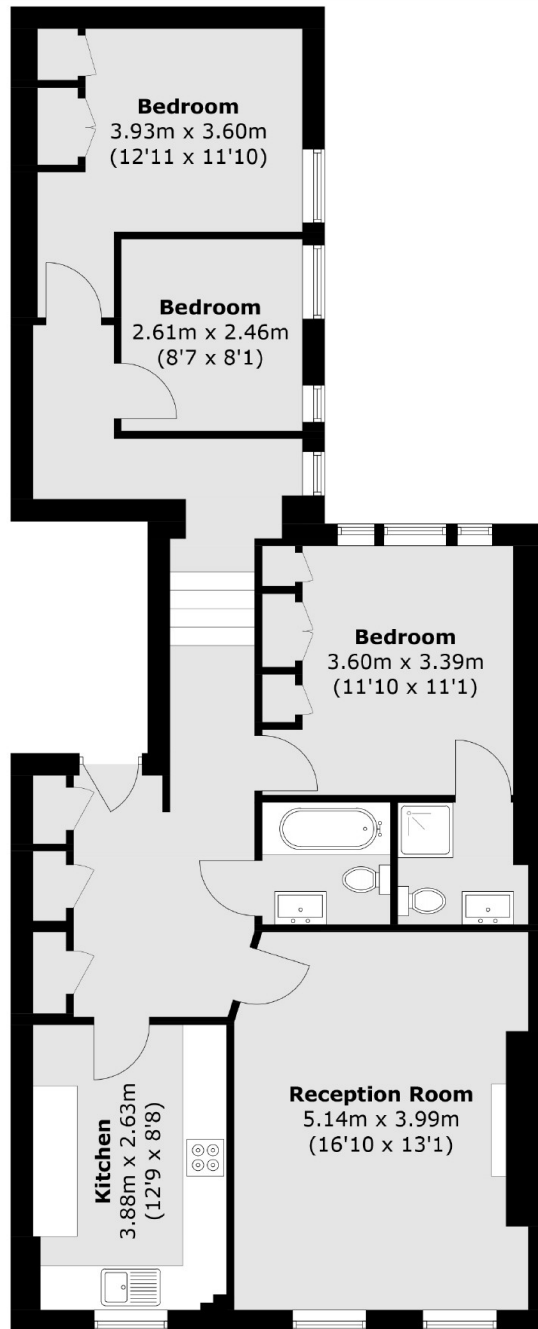
Brechin Place, SW7

The property enjoys an abundance of natural light throughout, with well-proportioned rooms that provide a comfortable and versatile living space.

Set on a quiet street, it offers a peaceful retreat while being just moments away from excellent local amenities and the nearby tube station ensuring fast and easy access across London.



Brechin Place, London, SW7



Total area (approx.): 87.8 sq. m (945.1 sq. ft)

Dexters

South Kensington
144 Old Brompton Road
London
SW7 4NR
Sales
0207 838 0108

Energy Rating: C. We aim to make our particulars both accurate and reliable. However they are not guaranteed; nor do they form part of an offer or contract. If you require clarification on any points then please contact us, especially if you're traveling some distance to view. Please note that appliances and heating systems have not been tested and therefore no warranties can be given as to their good working order.

 **RICS** | Regulated
Estate Agent
and Letting Agent

[dexters.co.uk](https://www.dexters.co.uk)