



Onslow Gardens, SW7

£825 Per week

This generously proportioned two-bedroom, two-bathroom apartment is set within the prestigious Onslow communal gardens. The residence features a spacious living room and kitchen, ample built-in storage, and the added benefit of a private outdoor area.

Onslow Gardens is one of South Kensington's most prestigious garden squares, offering a tranquil residential setting in the heart of London. The property is ideally positioned just moments from a wide array of bars, restaurants, and retail amenities along Old Brompton Road and Gloucester Road. Excellent transport connections are available nearby, with Gloucester Road and South Kensington underground stations providing access to the District and Piccadilly lines.

Features

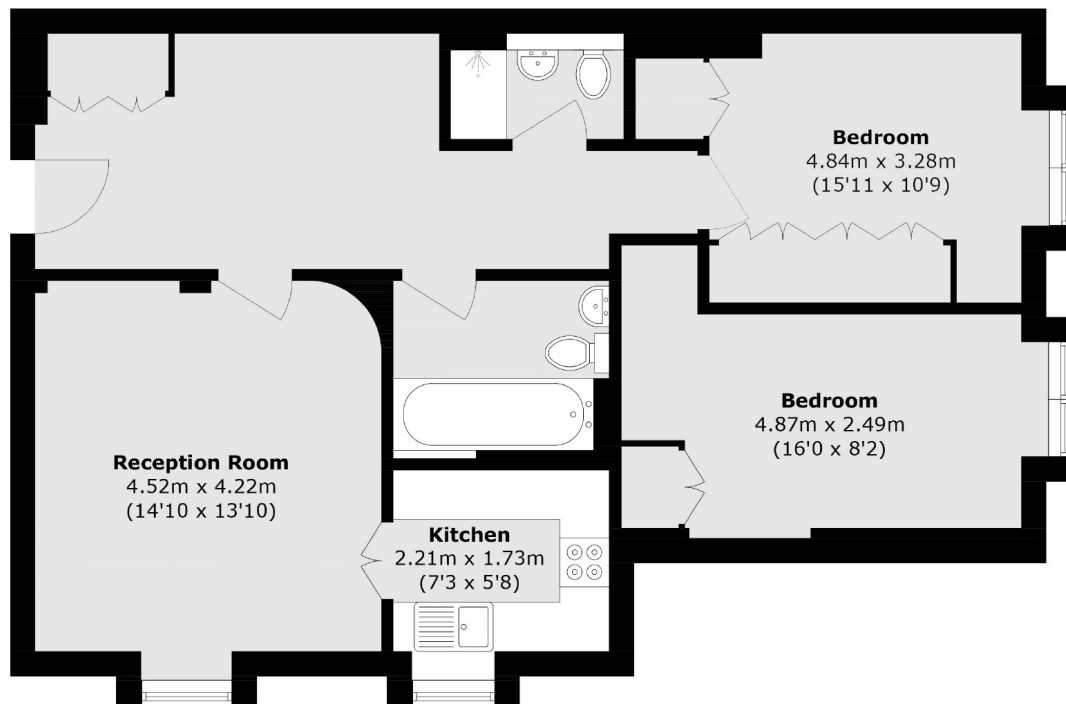
- Two double bedrooms
- Access to communal gardens
- Furnished
- Period build
- Wooden Floors
- Separate kitchen



Onslow Gardens, SW7



Onslow Gardens, London, SW7



Total area (approx.): 85.1 sq. m (916.0 sq. ft)