



Roland Gardens, SW7

£550 Per week

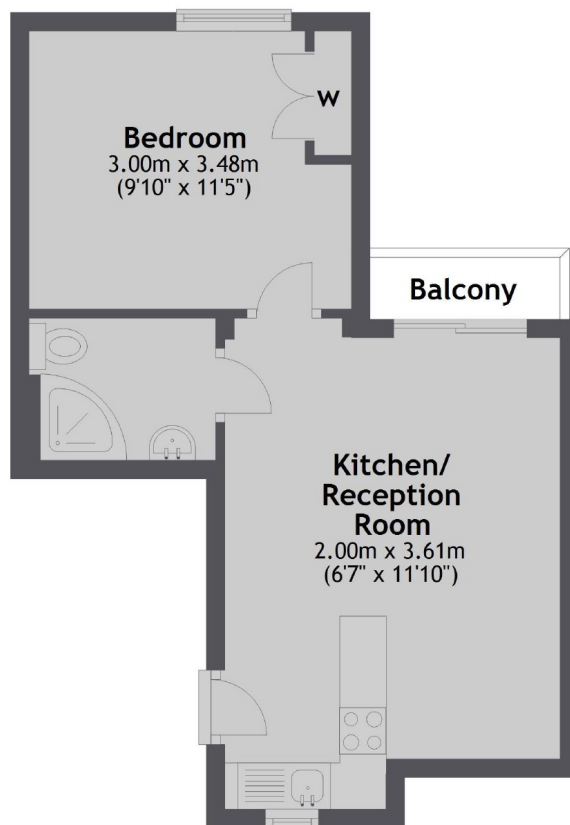
Situated on one of South Kensington's most prestigious streets, this well-appointed one-bedroom residence offers an exceptional living experience. Ideally suited for professionals, the property provides immediate access to the vibrant cultural, culinary, and commercial offerings of the area, placing residents at the very heart of London's dynamic lifestyle.

Ideally positioned close to Gloucester Road and South Kensington, this property benefits from close proximity to an extensive selection of dining and retail options. Residents will enjoy access to well-known establishments including Waitrose supermarket, Tesco Local, Boots pharmacy, and the charming Hummingbird Café, all contributing to a vibrant and convenient lifestyle in one of London's most sought-after neighbourhoods.

Features

- Spacious Double Bedroom
- First Floor
- Modern Shower Room
- Wooden Floors
- Private Balcony
- Excellent Location

Roland Gardens, London, SW7



Total area: approx. 31.7 sq. metres (340.7 sq. feet)