



## Ennismore Gardens, SW7

£3,230 Per week

**Dexters**



## Ennismore Gardens, SW7

Located in the prestigious Ennismore Gardens, this expansive duplex apartment occupies the 11th and 12th floors of a well-maintained portered building with lift access. Offering approximately 2,022 sq ft of meticulously arranged living space, the residence enjoys a prime position in the heart of Knightsbridge.

The apartment offers four generously proportioned bedrooms and four well-appointed bathrooms, providing flexible accommodation ideal for both families and professionals. A substantial terrace presents an inviting space for al fresco dining and leisure, while two additional balconies enhance the flow of natural light and offer picturesque views throughout the residence.

Kingston House South occupies a premier position directly opposite Hyde Park, affording uninterrupted views of its verdant landscape. Ideally located within walking distance of Knightsbridge and South Kensington, the property offers immediate access to a wealth of world-class amenities, including Harrods, the Royal Albert Hall, and esteemed cultural institutions such as the Natural History Museum.

### Features

- Penthouse Duplex
- 4 Bedrooms
- 4 Shower rooms
- Private roof terrace
- Two additional balconies
- Furnished





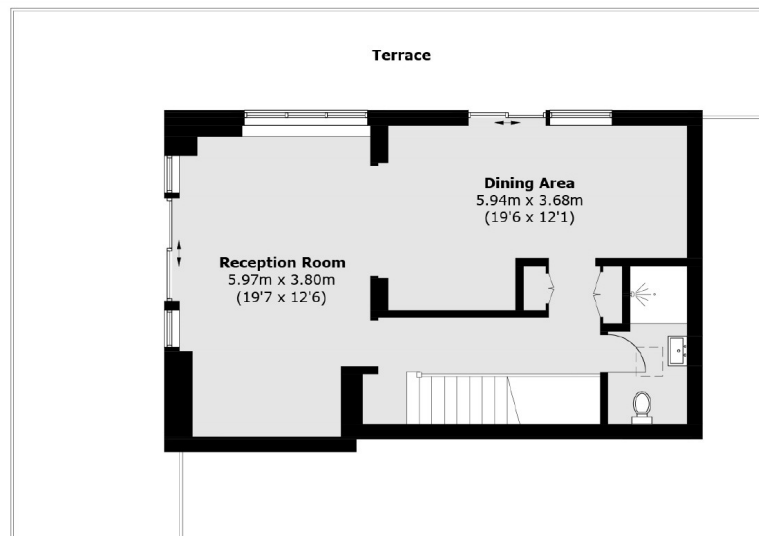




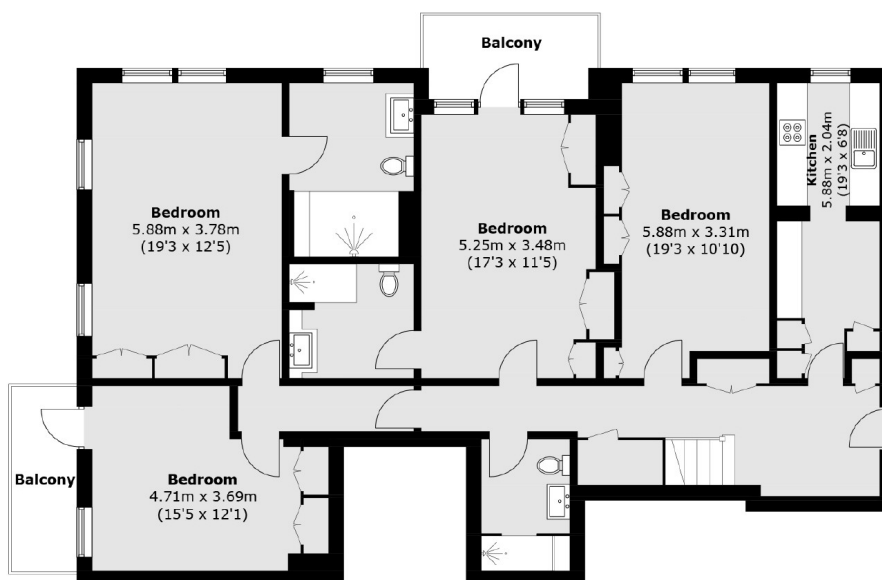




# Ennismore Gardens, London, SW7



## Twelfth Floor



## Eleventh Floor

Total area (approx.): 192.2 sq. m (2,068.8 sq. ft)  
Terrace / Balcony: 66.4 sq. m (714.7 sq. ft)