



## Philbeach Gardens, SW5

£775,000

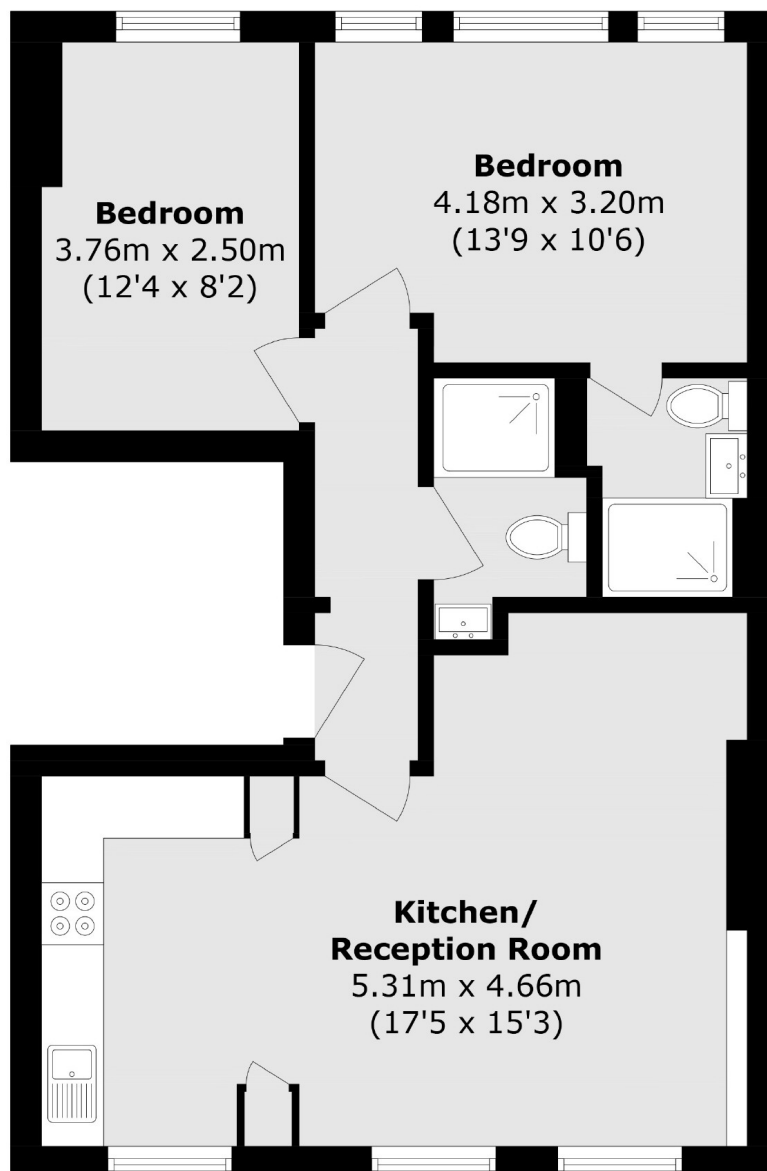
This beautifully presented two double bedroom apartment is located in the highly sought-after area of Earl's Court.

Philbeach Gardens is a quiet one way street located just off Warwick Road. It provides easy access to the A4 and Heathrow whilst maintaining a central London lifestyle.

### Features

- Two Double Bedrooms
- Highly Sought After Location
- Close To Earls Court
- Open-Plan Living
- No Ongoing Chain
- Abundance Of Natural Light

# Philbeach Gardens, London, SW5



Total area (approx.): 64.0 sq. m (688.8 sq. ft)