



Philbeach Gardens, SW5
£740,000

Dexters



Philbeach Gardens, SW5

This beautifully presented two double bedroom apartment is located in the highly sought-after area of Earl's Court. The bright and airy lounge benefits from an abundance of natural light and offers generous living space, perfect for relaxing or entertaining. The property is ideal for buyers seeking a move-in-ready home with no additional work required. Whether you're a first-time buyer, downsizer, or investor, this apartment offers comfort, style, and a prime London location.

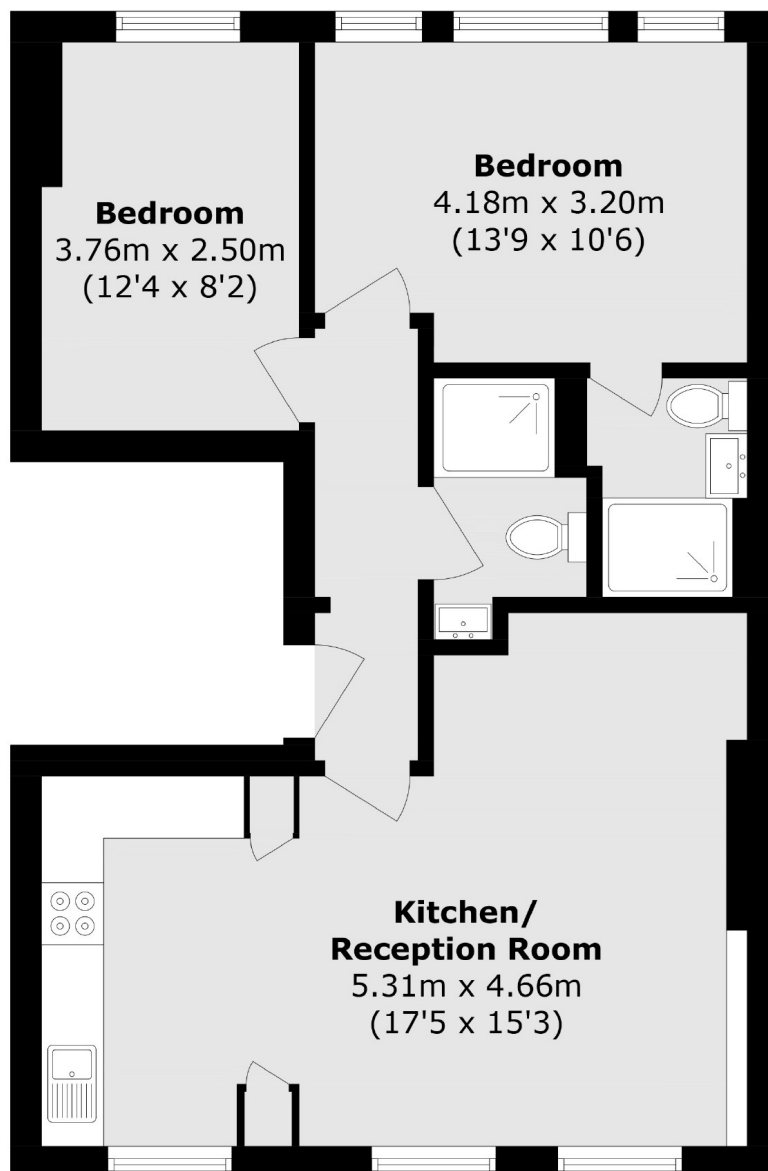
Philbeach Gardens is a quiet one way street located just off Warwick Road. It provides easy access to the A4 and Heathrow whilst maintaining a central London lifestyle.

Features

- Two Double Bedrooms
- Highly Sought After Location
- Close To Earls Court
- Open-Plan Living
- No Ongoing Chain
- Abundance Of Natural Light



Philbeach Gardens, London, SW5



Total area (approx.): 64.0 sq. m (688.8 sq. ft)