



Redcliffe Gardens, SW10
£1,325,000

Dexters



Redcliffe Gardens, SW10

Finished to the highest standards, this exceptional third-floor flat blends timeless elegance with contemporary luxury, featuring top-of-the-range fixtures and fittings throughout. Set within a grand period building, the apartment benefits from impressive ceiling heights and large, insulated windows, filling the space with natural light while ensuring exceptional peace and quiet.

The generous reception room offers a refined yet comfortable living space, complemented by an adjacent, fully integrated kitchen outfitted with premium appliances. Above the living room is a cleverly designed mezzanine-level study, ideal for working from home or additional flexible space. The principal bedroom suite is spacious and serene, complete with bespoke built-in wardrobes and a luxurious en suite bathroom. A second double bedroom and stylish guest bathroom complete the accommodation, making this home perfect for both comfortable everyday living and elegant entertaining.

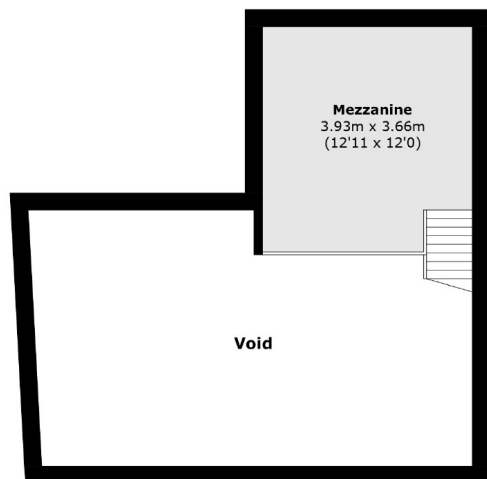
Redcliffe Gardens is a popular road ideally located between the Redcliffe Square gardens and Earls Court road. It is close to a range of shops and restaurants as well as Earls Court underground station.

Features

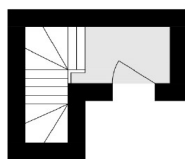
- Immaculate Finish
- No Ongoing Chain
- Stunning Open Plan Living
- Additional Study Space
- 10 Year Warranty
- New Communal Areas



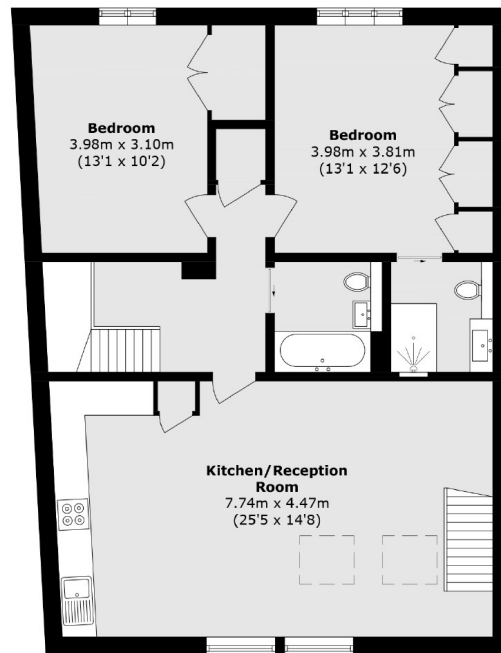
Redcliffe Gardens, London, SW10



Mezzanine



Third Floor



Fourth Floor

Total area (approx.): 100.2 sq. m (1078.5 sq. ft)
(Excluding Void)