



## Warwick Road, SW5

### £1,000,000

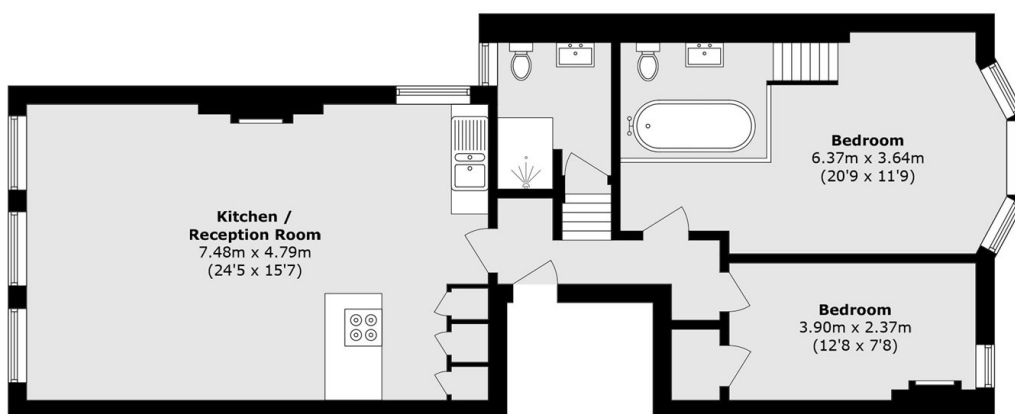
A beautifully presented first-floor, two-bedroom flat ideally located in Earls Court. This bright and spacious home features a generous open-plan kitchen and living area with views over Philbeach Gardens, two well-proportioned double bedrooms, a modern family bathroom, and a stylish en-suite to the principal bedroom. Finished to a high standard throughout, the property offers both comfort and convenience in a sought-after London location.

Warwick Road has access to the rear entrance of Earls Court tube station, the high street is only a few minutes away and High Street Kensington is within walking distance.

### Features

- First Floor Apartment
- Two Double Bedrooms
- Modern Finish
- Large Open Plan Reception
- Excellent Transport Links
- Access To Gardens

Warwick Road,  
London, SW5



Total area (approx.): 78.4 sq. m (843.9 sq. ft)

**Dexters**

South Kensington  
144 Old Brompton Road  
London  
SW7 4NR  
Sales  
0207 838 0108

Energy Rating: TBC. We aim to make our particulars both accurate and reliable. However they are not guaranteed; nor do they form part of an offer or contract. If you require clarification on any points then please contact us, especially if you're traveling some distance to view. Please note that appliances and heating systems have not been tested and therefore no warranties can be given as to their good working order.

 **RICS** | Regulated  
Estate Agent  
and Letting Agent

[dexters.co.uk](https://www.dexters.co.uk)