

## Ennismore Gardens, SW7

### £585,000

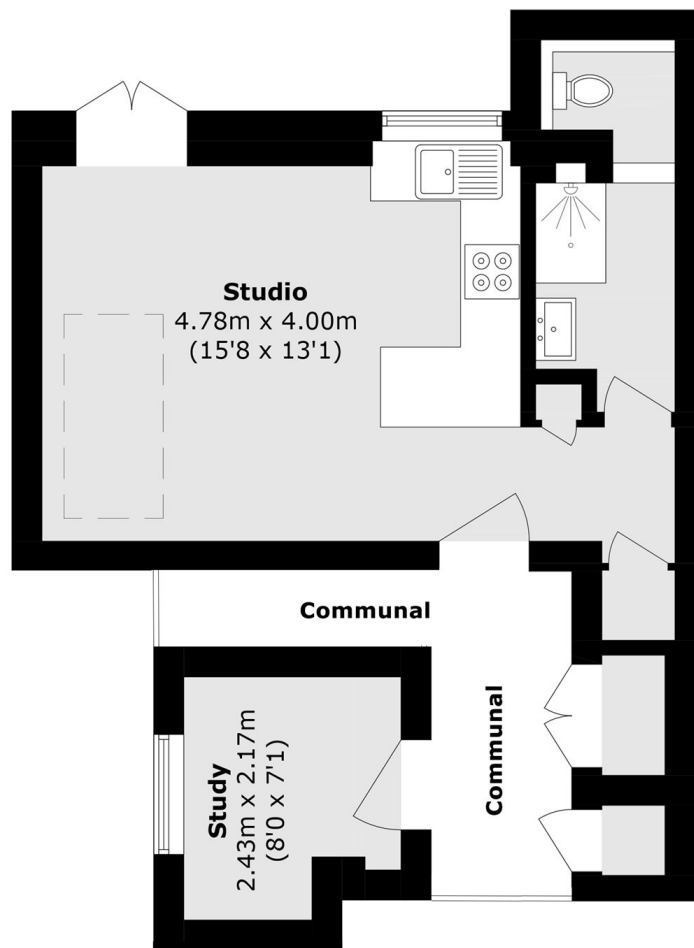
This recently refurbished apartment, complete with a separate self-contained studio, is located in the highly sought-after Ennismore Gardens. The residence offers elegant high ceilings that enhance the sense of space and natural light throughout. Ideally positioned just moments from Hyde Park, it provides the perfect blend of tranquil residential living and immediate access to one of London's most iconic green spaces.

This studio flat is only a short walk away from both Knightsbridge and South Kensington Underground Station, as well as the beautiful surrounding gardens and Hyde Park.

### Features

- High Ceilings
- Spacious Studio Flat
- Close to Amenities
- Ideal First Time Purchase
- Highly Sought After Location
- Abundance of Natural Light

# Ennismore Gardens, London, SW7



## Lower Ground Floor

Total Internal (approx.): 32.1 sq. m (345.5 sq. ft)  
External storage area (approx.): 1.4 sq. m (15.0 sq. ft)