



Dove Mews, SW5

£525 Per week

A great one bedroom flat to rent on a quiet cobbled street with its own entrance, modern finishings and a private outside courtyard.

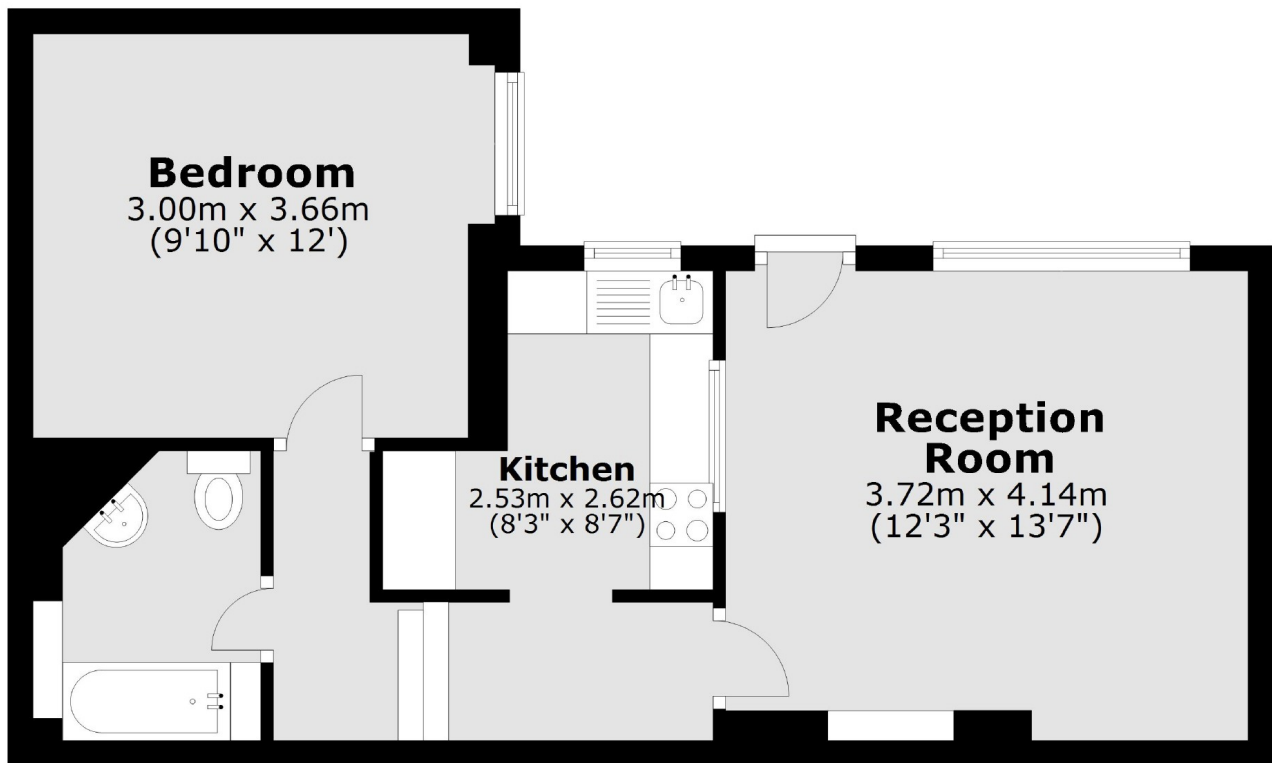
Dove Mews is a quiet mews, with Gloucester Road not too far, with its wide choice of cafés, shops and restaurants. Gloucester Road is the closest underground.

Features

- One Bedroom
- Newly Refurbished
- Wood Floors
- Own Entrance
- Cobbled Mews
- Excellent Location

Dove Mews,
London, SW5

Lower Ground Floor



Total area: approx. 42.7 sq. metres (459.9 sq. feet)