



Thurloe Place Mews, SW7

£692 Per week

This newly renovated one-bedroom Mews House, positioned at the end of the terrace on a quiet residential street, is enviably located just moments from South Kensington Station.

Thurloe Place is a highly prestigious address, providing convenient access to renowned landmarks such as Harrods and Harvey Nichols in Knightsbridge, along with an extensive selection of fine restaurants and bars in South Kensington.

Features

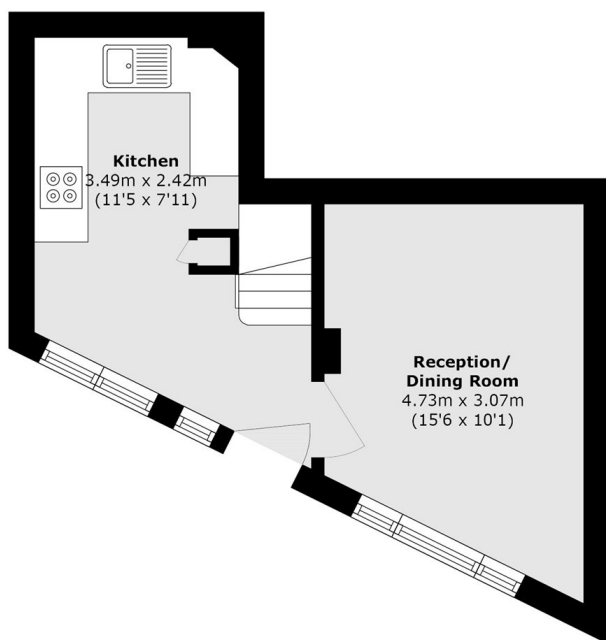
- One Bedroom House
- Newly Renovated
- Wooden Flooring
- Modern Fixtures & Fittings
- Separate Kitchen
- Excellent Location



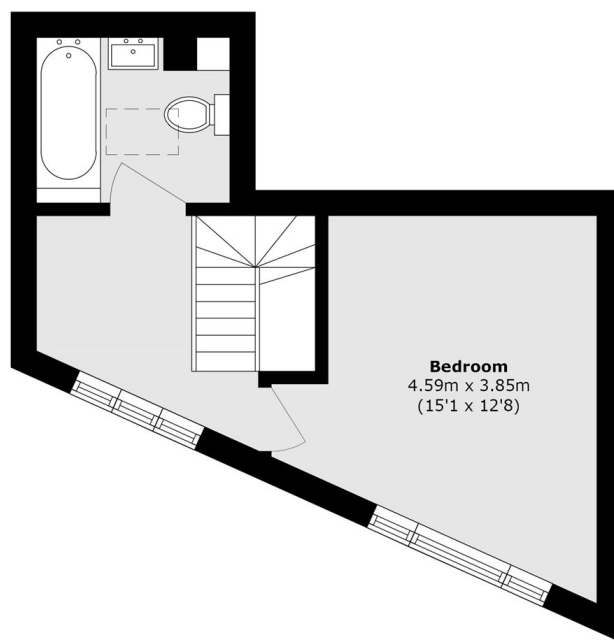
Thurloe Place Mews, SW7



Thurloe Place Mews, London, SW7



Ground Floor



First Floor

Total area (approx.): 50.4 sq. m (542.5 sq. ft)