



Earl's Court Square, SW5

£1,200,000

This property is offered with no onward chain benefiting from access to well-maintained communal gardens and a prime location within walking distance of Earl's Court Underground Station and a wide range of local amenities. Finished to a high standard, this charming home offers comfortable living in a sought-after setting, perfectly suited to professionals, sharers, or a small family.

Earl's Court Square is conveniently positioned between Earl's Court Road and Warwick Road, offering close proximity to a wide selection of shops, restaurants, and bars. The nearest Underground station, Earl's Court, provides excellent transport links into central London.

Features

- Two Spacious Bedrooms
- Lift Access
- Access To Communal Gardens
- Immaculate Finish
- No Ongoing Chain
- Abundance Of Natural Light

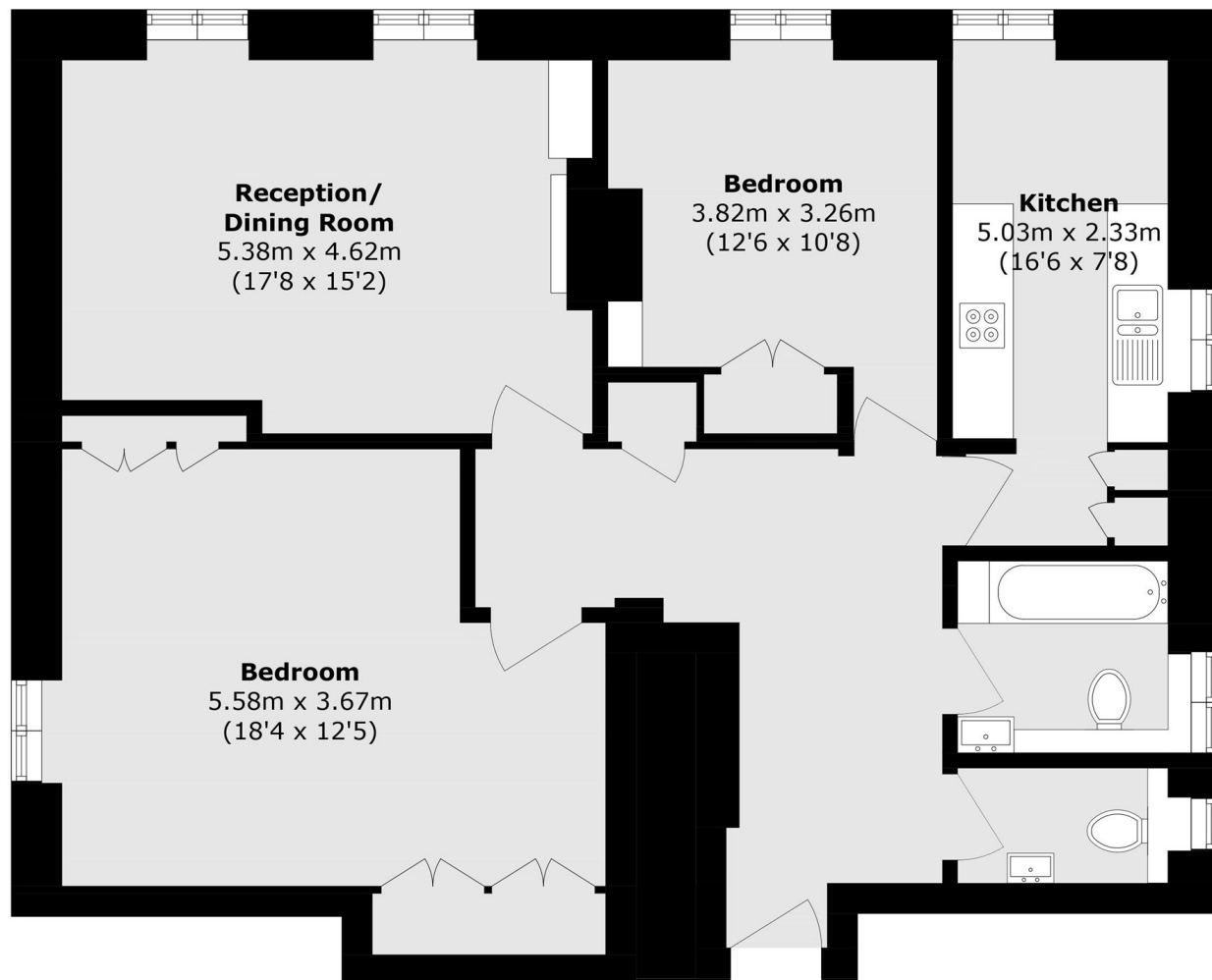


Earl's Court Square, SW5

A recently refurbished two double bedroom flat situated on the third floor of a beautiful Georgian building, combining classic period charm with modern finishes throughout. The property boasts a bright and spacious living room with impressive high ceilings, creating a wonderful sense of space and light, ideal for both entertaining and relaxing. Large windows allow natural light to flood the room, enhancing the elegant proportions typical of Georgian architecture.



Earl's Court Square, London, SW5



Third Floor

Total area (approx.): 91.2 sq. m (981.6 sq. ft)