

## Warwick Road, SW5

### £650,000

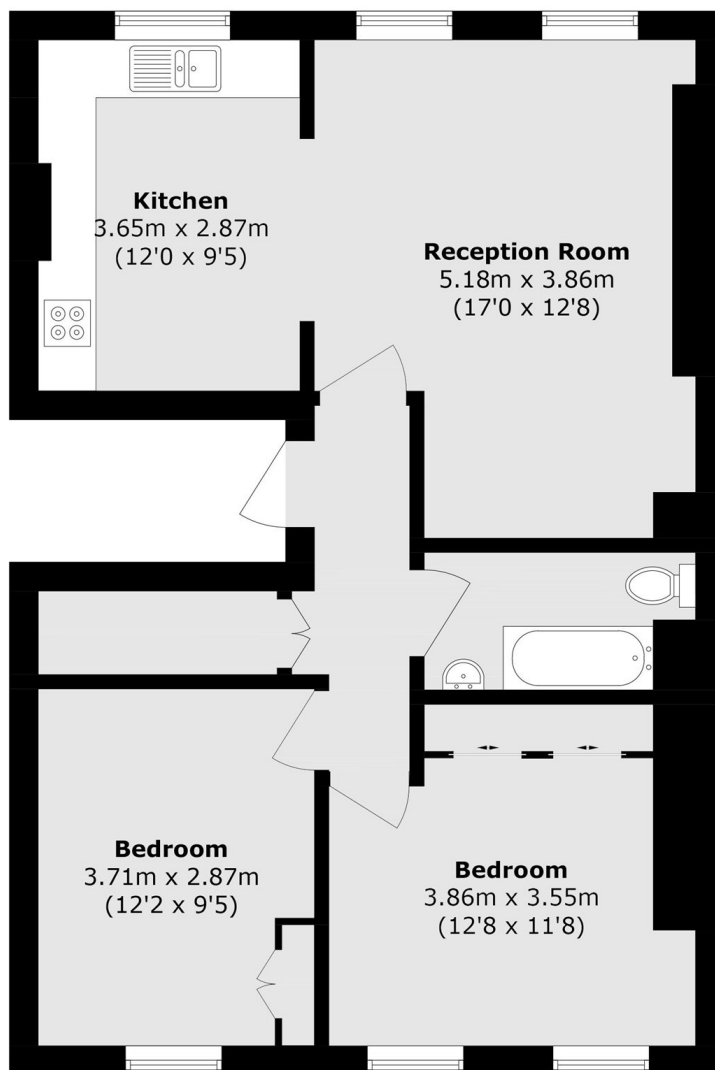
A beautifully presented two-bedroom flat finished to a high standard and ideally located in the heart of Earl's Court. The property features a spacious reception room, perfect for entertaining, a semi open-plan modern kitchen, two well-proportioned double bedrooms, and a contemporary bathroom. The flat benefits from views and access over well-maintained communal gardens, allowing for an abundance of natural light throughout.

Warwick Road has access to the rear entrance of Earls Court tube station, the high street is only a few minutes away and High Street Kensington is within walking distance.

### Features

- Two Double Bedrooms
- Modern Finish
- Plenty Of Natural Light
- Close To Transport
- Period Conversion
- Access To Gardens

# Warwick Road, London, SW5



## Third Floor

Total area (approx.): 65.4 sq. m (703.9 sq. ft)