

## Dove Mews, SW5

### £500,000

A well-presented one-bedroom apartment set on a quiet, private mews in the heart of South Kensington. Recently refurbished throughout, the property offers modern interiors while retaining a sense of privacy with its private entrance. Offered with no onward chain, it represents an ideal opportunity for a first-time buyer or a buy-to-let investment. The flat benefits from a patio area providing a cosy outdoor space which gets an abundance of sunshine; together with an ample and secure outdoor storage shed.

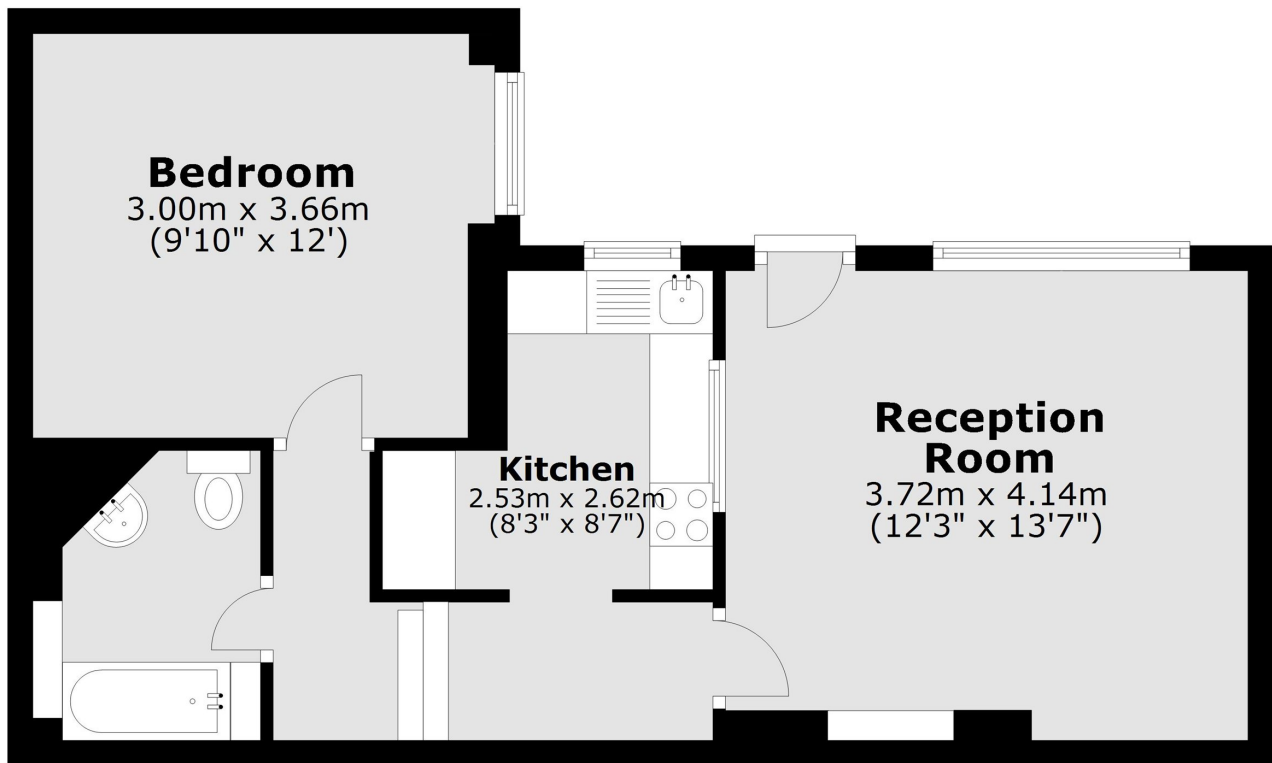
Dove Mews is a peaceful residential enclave situated within easy reach of Gloucester Road, which provides an extensive selection of cafés, shops, and restaurants. The property enjoys excellent transport links, with Gloucester Road Underground Station located nearby.

### Features

- One Bedroom
- Recently Refurbished
- Private Entrance
- Close To South Kensington
- No Ongoing Chain
- Highly Sought After Location

# Dove Mews, London, SW5

## Lower Ground Floor



Total area: approx. 42.7 sq. metres (459.9 sq. feet)