



## Southwell Gardens, SW7

£625 Per week

A great one bedroom flat to rent on in a period conversion, with high ceilings and private outside space on a particularly popular street in South Kensington, perfect for a couple or a single person

This apartment is excellently located, just a short walk from the shops and restaurants of Gloucester Road, including a Waitrose Supermarket. The closest Underground Station is Gloucester Road.

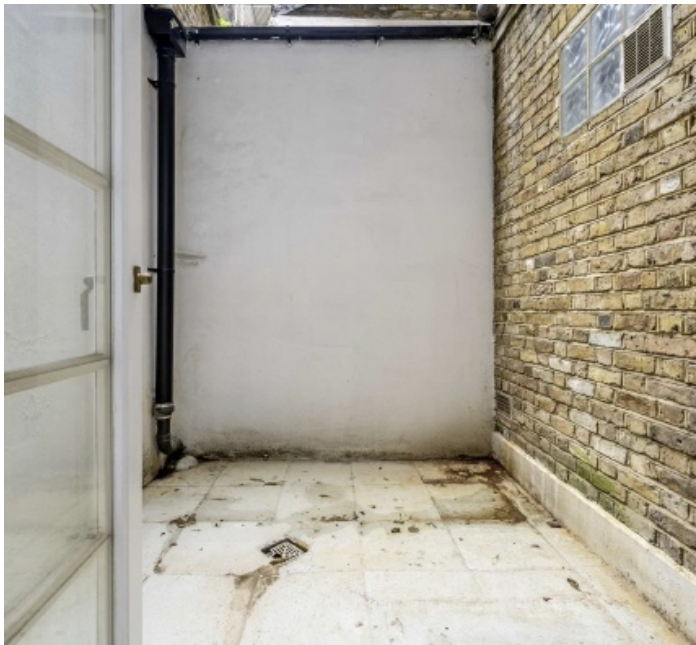
### Features

Large One Bedroom  
Private Outside Space  
Excellent Location  
High Ceilings  
Modern Kitchen And  
Bathroom

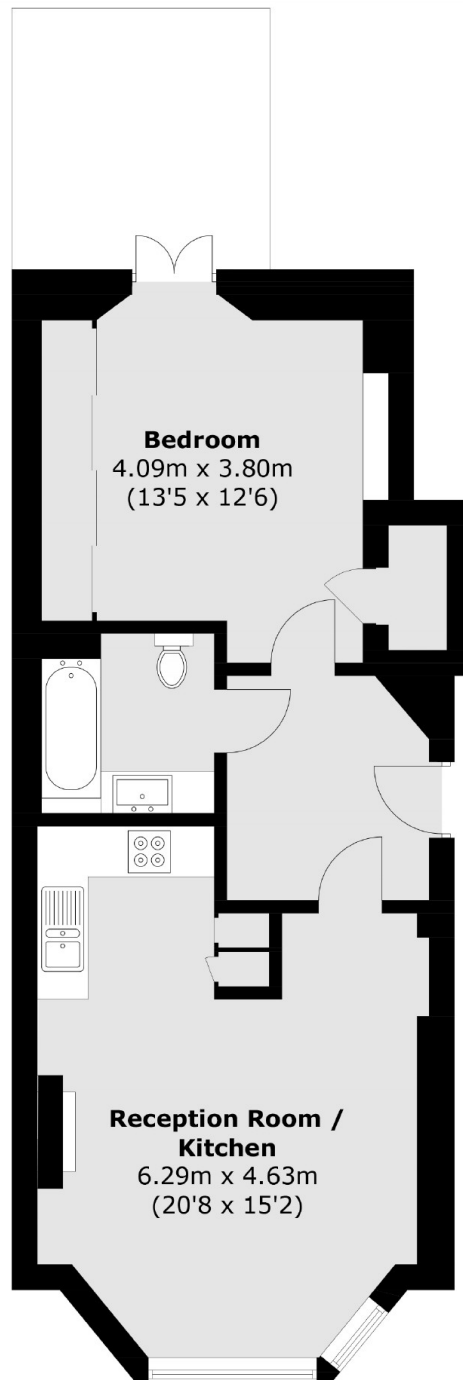


Southwell Gardens, SW7





# Southwell Gardens, London, SW7



Total area (approx.): 54.5 sq. m (586.6 sq. ft)

## Dexters

South Kensington  
144 Old Brompton Road  
London  
SW7 4NR  
Lettings  
020 7244 7711

Energy Rating: C. We aim to make our particulars both accurate and reliable. However they are not guaranteed; nor do they form part of an offer or contract. If you require clarification on any points then please contact us, especially if you're traveling some distance to view. Please note that appliances and heating systems have not been tested and therefore no warranties can be given as to their good working order.

 **RICS** | Regulated  
Estate Agent  
and Letting Agent

[dexters.co.uk](https://www.dexters.co.uk)