



Courtfield Gardens, SW5

£750 Per week

Dexters



Courtfield Gardens, SW5

This recently refurbished two bedroom flat is presented in excellent condition, offering a clean, modern interior that is ready for immediate occupation. The accommodation comprises two well proportioned double bedrooms with integrated storage, a separate WC and shower room, and a bright semi open plan living area.

The property also features a private garden with four seating areas, providing generous outdoor space to enjoy. White tiles run throughout the flat, and a range of lighting options allows the atmosphere to be adjusted to different needs.

Courtfield Gardens is situated within a short walking distance of three Underground stations (Gloucester Road, Earl's Court, and South Kensington) providing convenient access to the District, Circle, and Piccadilly lines. The surrounding area also offers a wide selection of restaurants, bars, cafés, and shops, all easily reached on foot.

Features

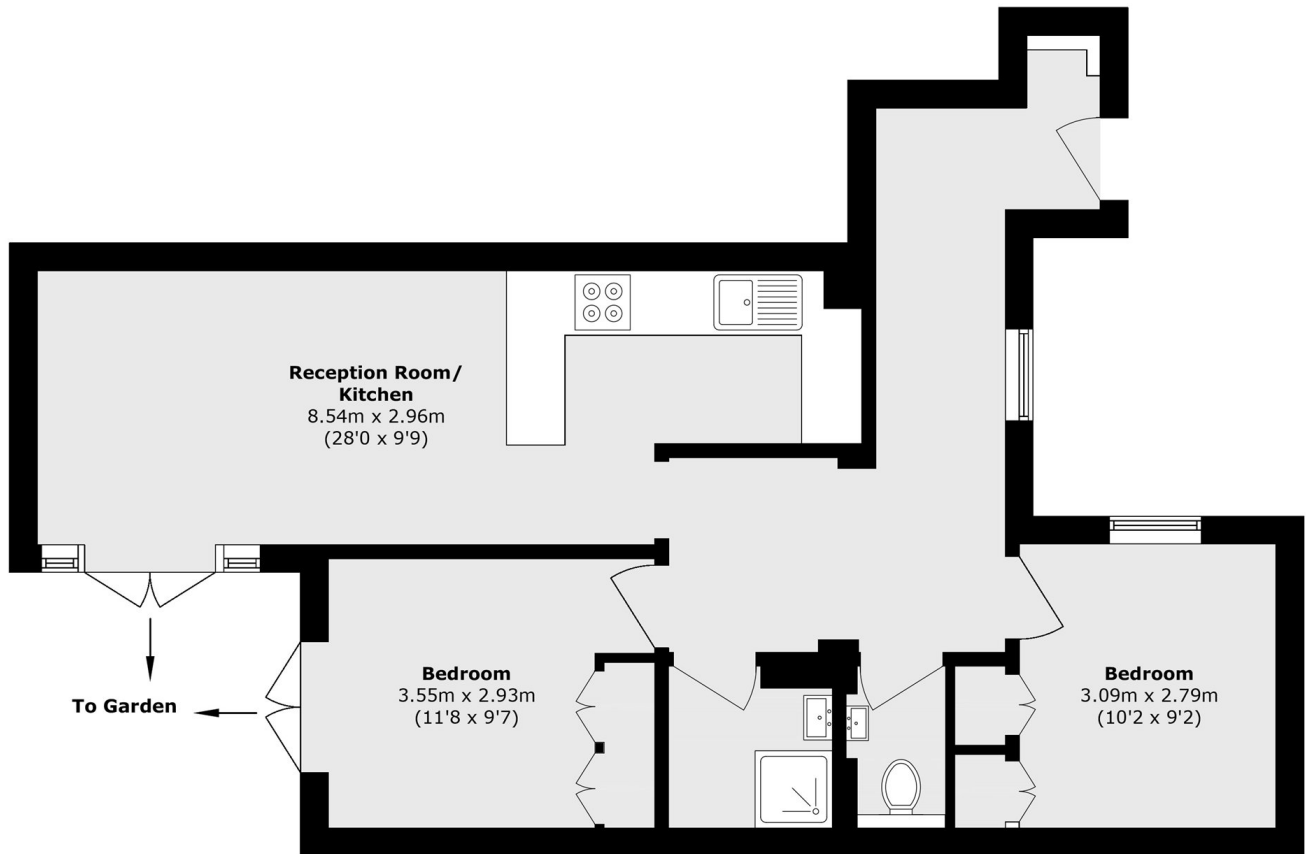
- 2 bed
- New refurb
- Private Garden
- Communal Garden access
- Bright
- Prime location







Courtfield Gardens, London, SW5



Lower Ground Floor

Total area (approx.): 67.3 sq. m (724.4 sq. ft)