



13 Morven Street | Creswell | Worksop | S80 4AJ Offers In Region Of £99,500

THIS WELL PRESENTED SEMI DETACHED PROPERTY IS SITUATED IN THE POPULAR RESIDENTIAL AREA OF CRESWELL AND WOULD BE IDEAL FOR FIRST TIME BUYERS OR INVESTORS.

*TWO BEDROOMS

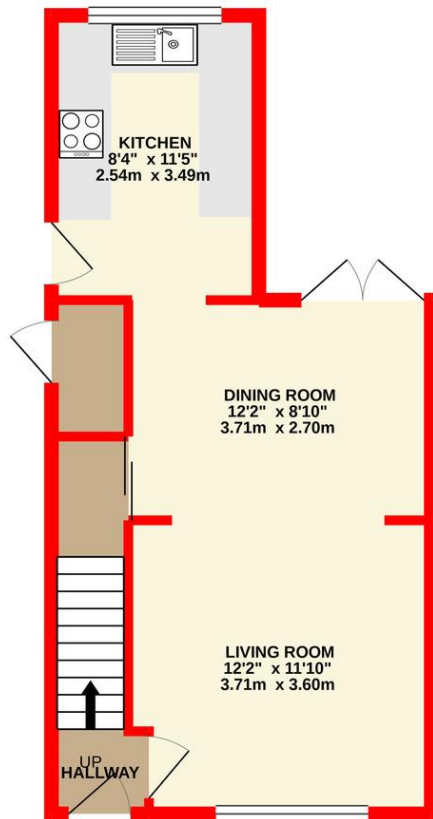
*FULLY ENCLOSED REAR GARDEN

*VIEWS OF THE OPEN COUNTRYSIDE TO THE REAR

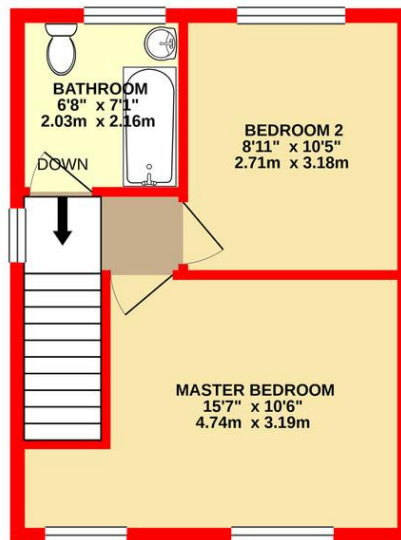
- Lounge
- Dining Area
- Fitted Kitchen
- Bathroom
- Upvc Double Glazing



GROUND FLOOR
411 sq.ft. (38.2 sq.m.) approx.



1ST FLOOR
325 sq.ft. (30.2 sq.m.) approx.



TOTAL FLOOR AREA : 736 sq.ft. (68.4 sq.m.) approx.

Whilst every attempt has been made to ensure the accuracy of the floorplan contained here, measurements of doors, windows, rooms and any other items are approximate and no responsibility is taken for any error, omission or mis-statement. This plan is for illustrative purposes only and should be used as such by any prospective purchaser. The services, systems and appliances shown have not been tested and no guarantee as to their operability or efficiency can be given.
Made with Metropix ©2020

Contact Details

26 Mill Street
Clowne
Chesterfield
Derbyshire
S43 4JN

www.villageestateagency.co.uk
info@villageestateagency.co.uk
01246 810519

Agents Note: Whilst every care has been taken to prepare these sales particulars, they are for guidance purposes only. All measurements are approximate are for general guidance purposes only and whilst every care has been taken to ensure their accuracy, they should not be relied upon and potential buyers are advised to recheck the measurements