



2 Smithson Avenue | Bolsover | Chesterfield | S44 6ED Offers In Region Of £119,950

BEING OFFERED WITH NO UPWARD CHAIN THIS SEMI DETACHED PROPERTY IS LOCATED NEAR THE HISTORIC BOLSOVER CASTLE AND IS AN IDEAL FAMILY HOME

THREE BEDROOMS

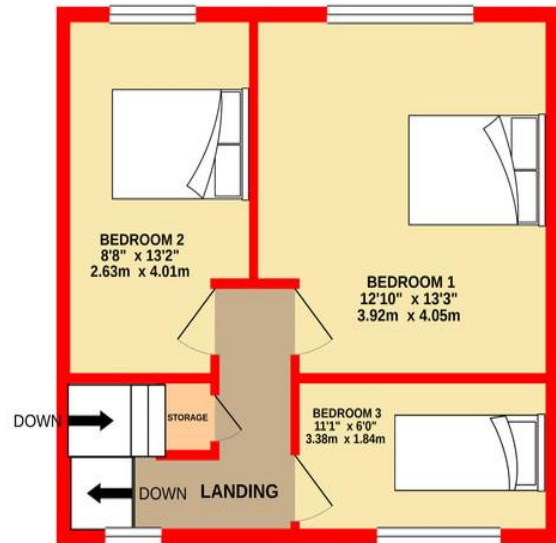
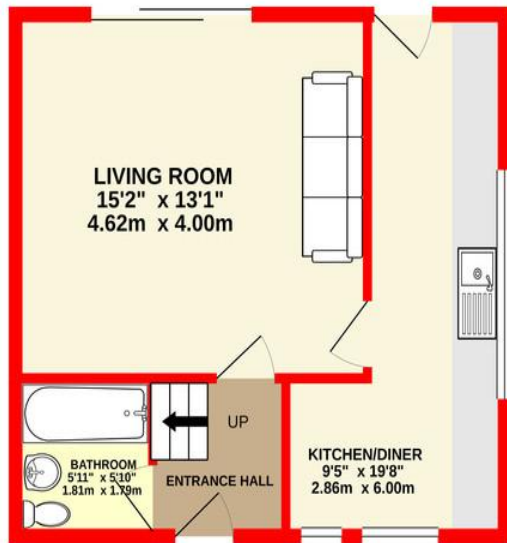
GARDENS TO THE FRONT, SIDE & REAR  
CLOSE TO THE TOWN CENTRE

- Lounge
- Dining Kitchen
- Family Bathroom
- Gas Central Heating
- Upvc Double Glazing



GROUND FLOOR

1ST FLOOR



Whilst every attempt has been made to ensure the accuracy of the floorplan contained here, measurements of doors, windows, rooms and any other items are approximate and no responsibility is taken for any error, omission or mis-statement. This plan is for illustrative purposes only and should be used as such by any prospective purchaser. The services, systems and appliances shown have not been tested and no guarantee as to their operability or efficiency can be given.  
Made with Metropix ©2021

## Contact Details

26 Mill Street  
Clowne  
Chesterfield  
Derbyshire  
S43 4JN

[www.villageestateagency.co.uk](http://www.villageestateagency.co.uk)  
[info@villageestateagency.co.uk](mailto:info@villageestateagency.co.uk)  
01246 810519

Agents Note: Whilst every care has been taken to prepare these sales particulars, they are for guidance purposes only. All measurements are approximate are for general guidance purposes only and whilst every care has been taken to ensure their accuracy, they should not be relied upon and potential buyers are advised to recheck the measurements