



Old Kent Road, SE1

£235,000

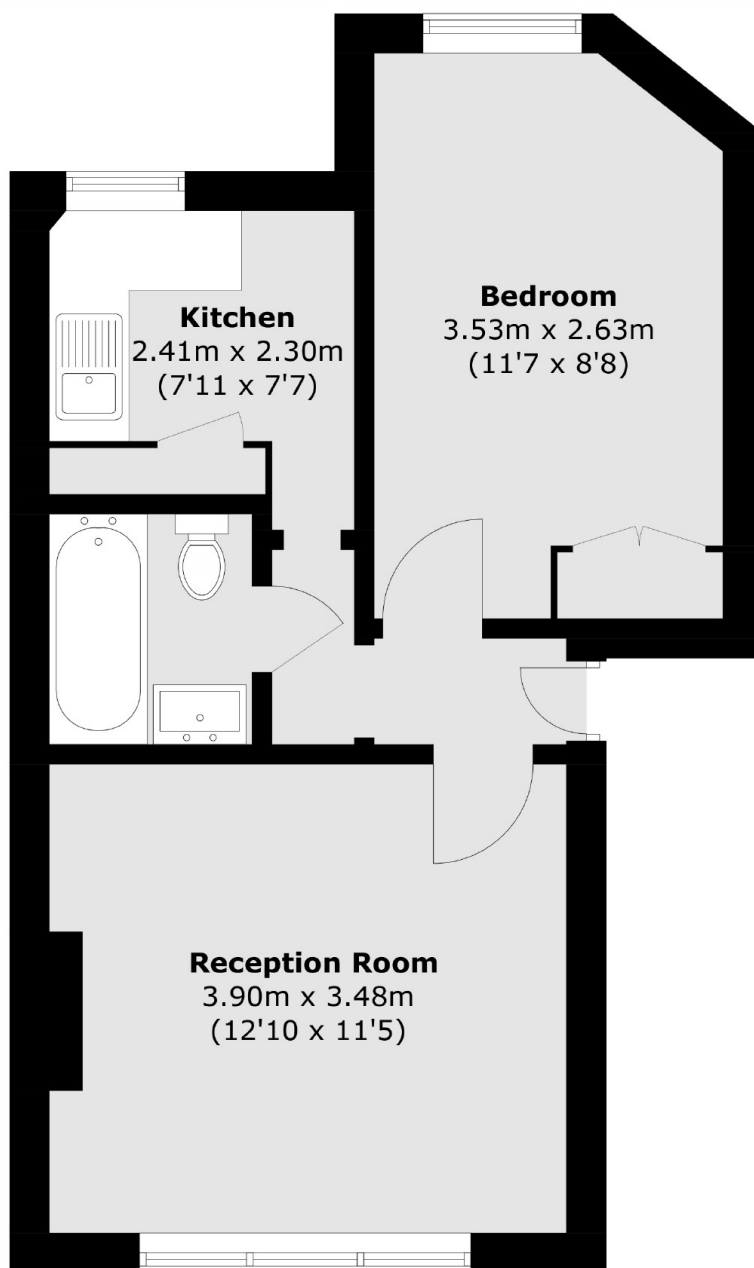
An attractive Victorian Mansion Flat, requiring refurbishment, with a separate kitchen and a large living room, a generous double bedroom and a three piece bathroom. This is a chain free sale, ideal for a first time buyer or an investor. Offers in excess of £250,000

Close by to both Borough and Elephant & Castle Stations (Zone 1) with access to the Northern Line & Bakerloo Line. There are also great bus routes into Central London and numerous amenities on your doorstep.

Features

- Offers in excess of £250,000
- Victorian Mansion Flat
- Secure Entry
- Double Glazing
- One Double Bedroom
- Separate Kitchen & Living Room
- Excellent Transport Links
- Chain Free Sale

Old Kent Road, London, SE1



Total area (approx.): 36.6 sq. m (394.0 sq. ft)