



Webber Street, SE1

£635,000

OIEO £635,000 - An immaculately presented apartment in a highly attractive modern development with a spacious open plan living room, with a modern kitchen, leading onto a private balcony with stunning views towards the City, two double bedrooms and two bathrooms.

Webber Street is found in the heart of SE1, between Borough, Southwark and London Bridge stations, with easy access to the Southbank, Borough Market and various other attractions including the Tate Modern and Globe Theatre.

Features

OIEO £635,000
4th Floor - Views of the City
New Kitchen & Bathrooms
Two Double Bedrooms
Two Bathrooms
Private Balcony
Residents' Concierge
EWS1 Compliant



Webber Street, SE1

The apartment benefits from full height windows in every room. The main living space opens out onto the balcony, which is also accessible from the second bedroom. The views are stunning from east to west, encompassing much of the London Skyline.

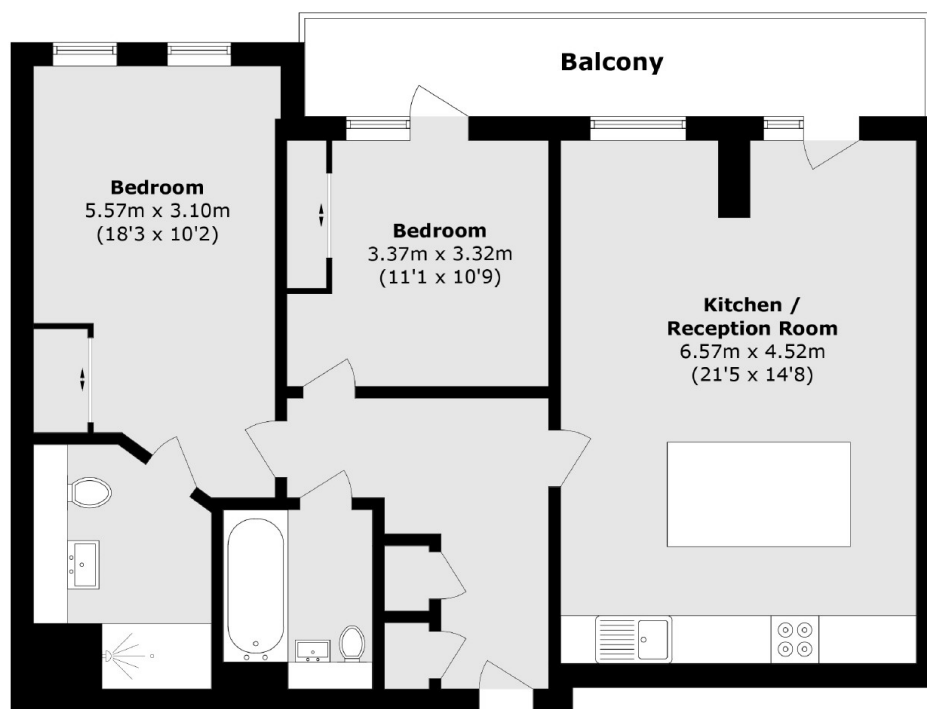
The kitchen is fully fitted with high spec integrated Bosch appliances (new hob and oven), new kitchen cabinets, granite splashbacks and worktops, a new kitchen island/breakfast bar. The fridge/freezer, washing machine and dishwasher (All AEG) were also replaced in 2024.

Both bedrooms are good doubles with ample space for king sized beds and built-in storage. Both bathrooms have been recently renovated with floor to ceiling tiling, new soft-close cabinetry, sanitaryware, extractor fans, electric underfloor heating and heated towel rails.

MyBase is a very well maintained and secure development with a 24 hour concierge service, residents' bike storage and a large communal courtyard. The building has recently undergone extensive works to the cladding and is now EWS1 compliant.



Webber Street, London, SE1



Total area (approx.): 77.7 sq. m (836.4 sq. ft)
Balcony area (approx.): 9.6 sq. m (103.3 sq. ft)