



## Ewer Street, SE1

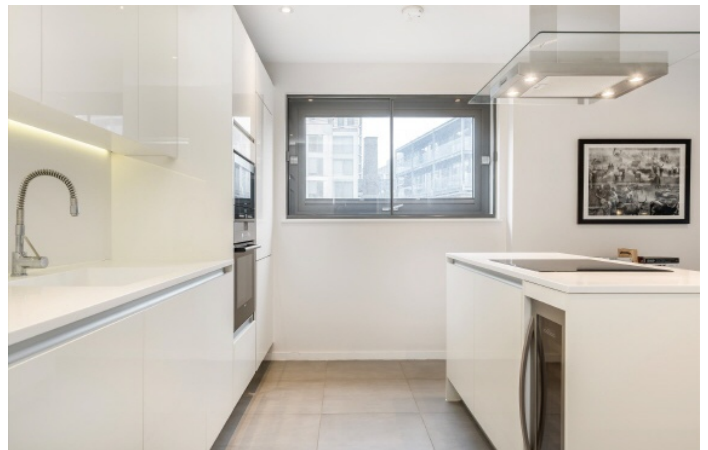
### £750,000

An immaculately presented dual-aspect apartment with a spacious open plan living room and kitchen, with a high spec fittings and a breakfast bar, two generous double bedrooms, two bathrooms and ample built-in storage

Ideally located in the heart of Bankside, the apartment is moments from Borough Market, The Tate Modern, and The Southbank's vibrant restaurants, bars, and theatres. Excellent transport links are nearby, with London Bridge, Southwark, and Blackfriars stations all within easy reach, offering Jubilee, Northern, and National Rail services.

### Features

- Dual Aspect Open Plan Living
- Private Balcony
- Two Double Bedrooms
- Two Bathrooms
- Ample Storage
- On-site Concierge



## Ewer Street, SE1

With large windows and a dual aspect, this apartment benefits from fantastic natural light. The modern open-plan kitchen features high-quality fittings, a Corian worktop and integrated appliances, while the bathrooms are finished to a sleek, contemporary standard. Tiled flooring throughout the living area enhances the clean and modern aesthetic.

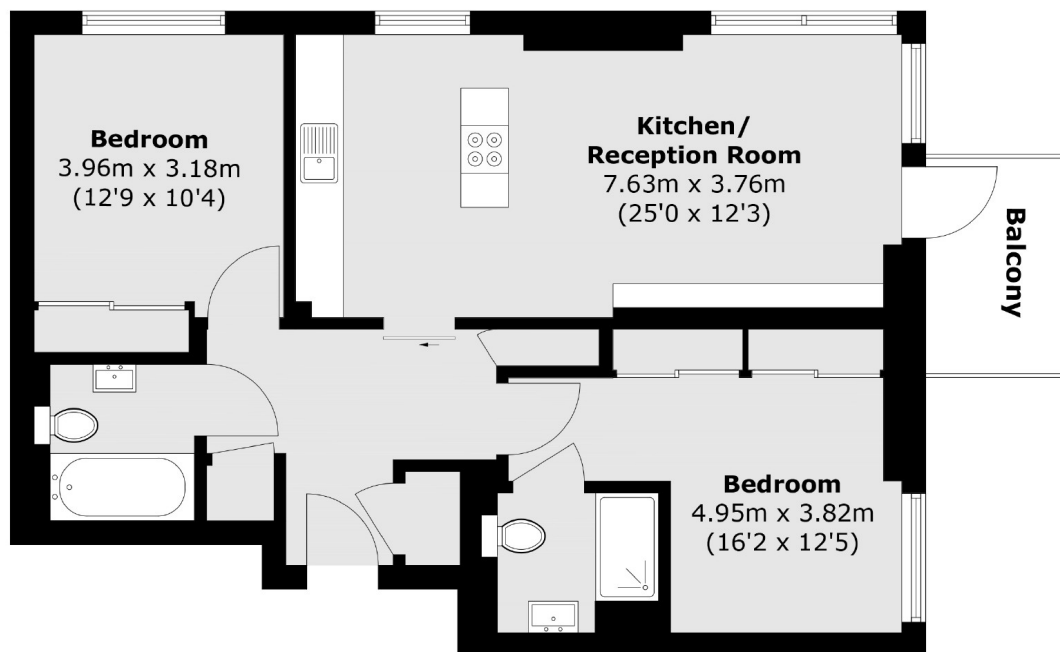
Both bedrooms are generous doubles, each with large built-in wardrobes. The principal bedroom benefits from a smart en-suite bathroom, whilst there is a three piece guest bathroom, accessed from the hallway.

The Rosler Building is a boutique residential development, designed by MGM Architects and completed in 2014, benefitting from an on-site concierge, lift access and secure entry, as well as a prime central location.





# Ewer Street, London, SE1



Total area (approx.): 75.4 sq. m (811.6 sq. ft)  
Balcony area (approx.): 4.7 sq. m (50.5 sq. ft)

## Dexters

London Bridge  
54 Borough High Street  
London  
SE1 1XL  
Sales  
020 7650 5 100

Energy Rating: C. We aim to make our particulars both accurate and reliable. However they are not guaranteed; nor do they form part of an offer or contract. If you require clarification on any points then please contact us, especially if you're traveling some distance to view. Please note that appliances and heating systems have not been tested and therefore no warranties can be given as to their good working order.

 **RICS** | Regulated  
Estate Agent  
and Letting Agent

[dexters.co.uk](https://www.dexters.co.uk)