



## Vine Yard, SE1

**£1,038** Per week

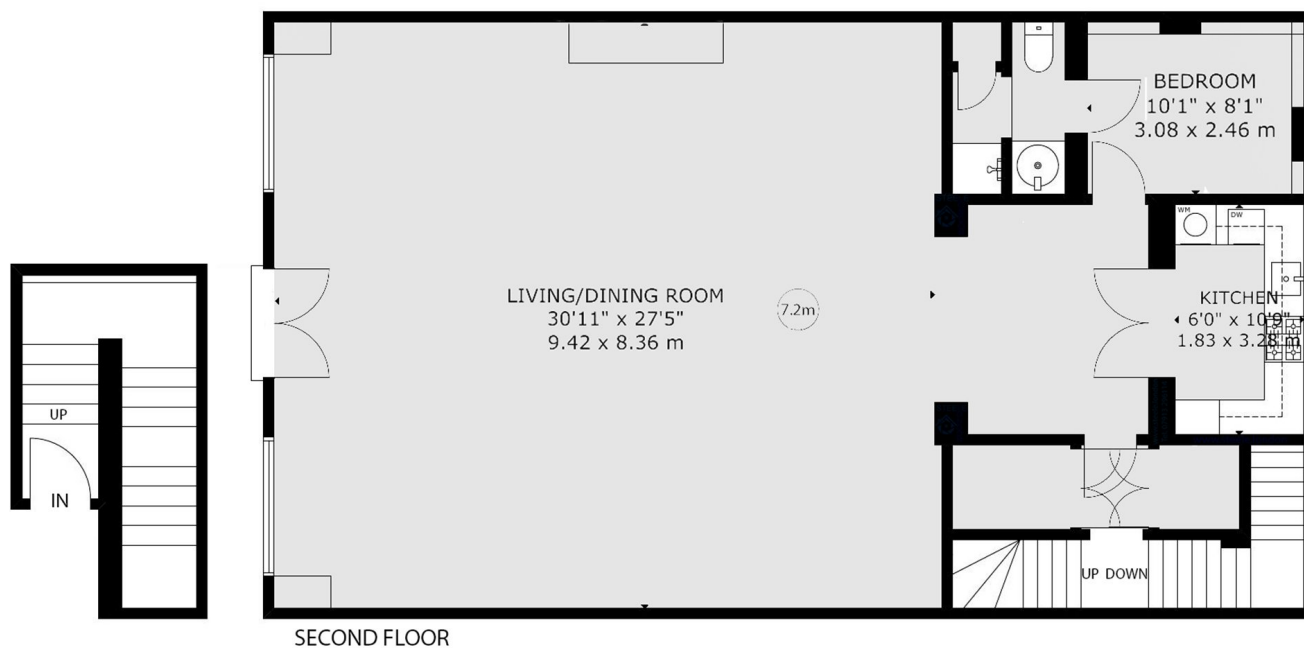
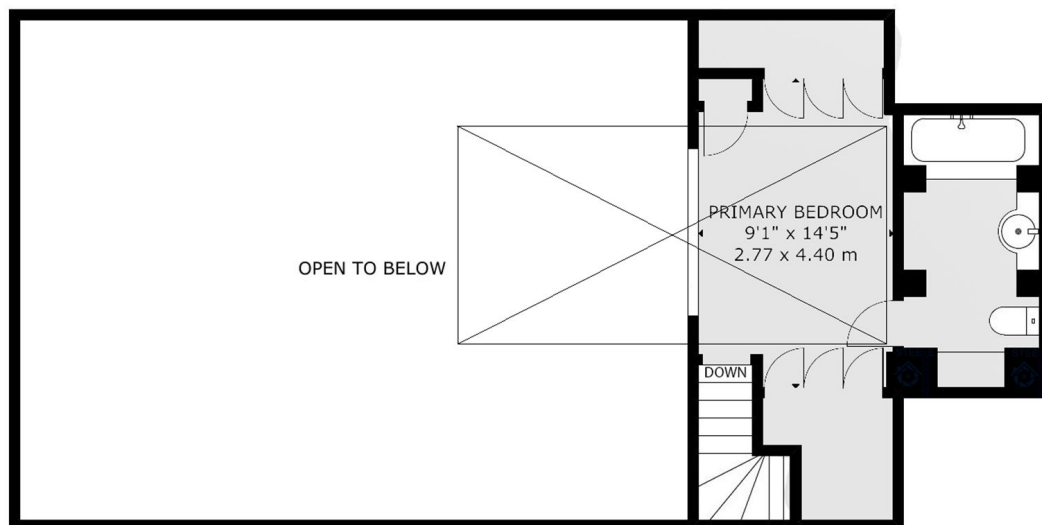
An exceptional two bedroom warehouse conversion in the heart of Borough. Displaying impressive amounts of character, the property extends to over 1700sqft.

Located behind Borough Station, Vine Yard is a hidden gem. London Bridge Station & Borough Market are also a short walk away.

### Features

- Two Bedroom
- Two Bathroom
- Amazing Location
- Over 1700SQFT
- Warehouse Conversion
- Built In Skylight

# Vine Yard, London, SE1



GROSS INTERNAL AREA  
TOTAL: 161 m<sup>2</sup>/1,723 sq.ft  
FLOOR 1: 10 m<sup>2</sup>/104 sq.ft, FLOOR 2: 123 m<sup>2</sup>/1,321 sq.ft, FLOOR 3: 28 m<sup>2</sup>/298 sq.ft  
SIZE AND DIMENSIONS ARE APPROXIMATE, ACTUAL MAY VARY

## Dexters

London Bridge  
54 Borough High Street  
London  
SE1 1XL  
Lettings  
020 7650 5101

Energy Rating: D. We aim to make our particulars both accurate and reliable. However they are not guaranteed; nor do they form part of an offer or contract. If you require clarification on any points then please contact us, especially if you're traveling some distance to view. Please note that appliances and heating systems have not been tested and therefore no warranties can be given as to their good working order.

 **RICS** Regulated  
Estate Agent  
and Letting Agent

dexters.co.uk