



Green Walk, SE1

£1,125,000

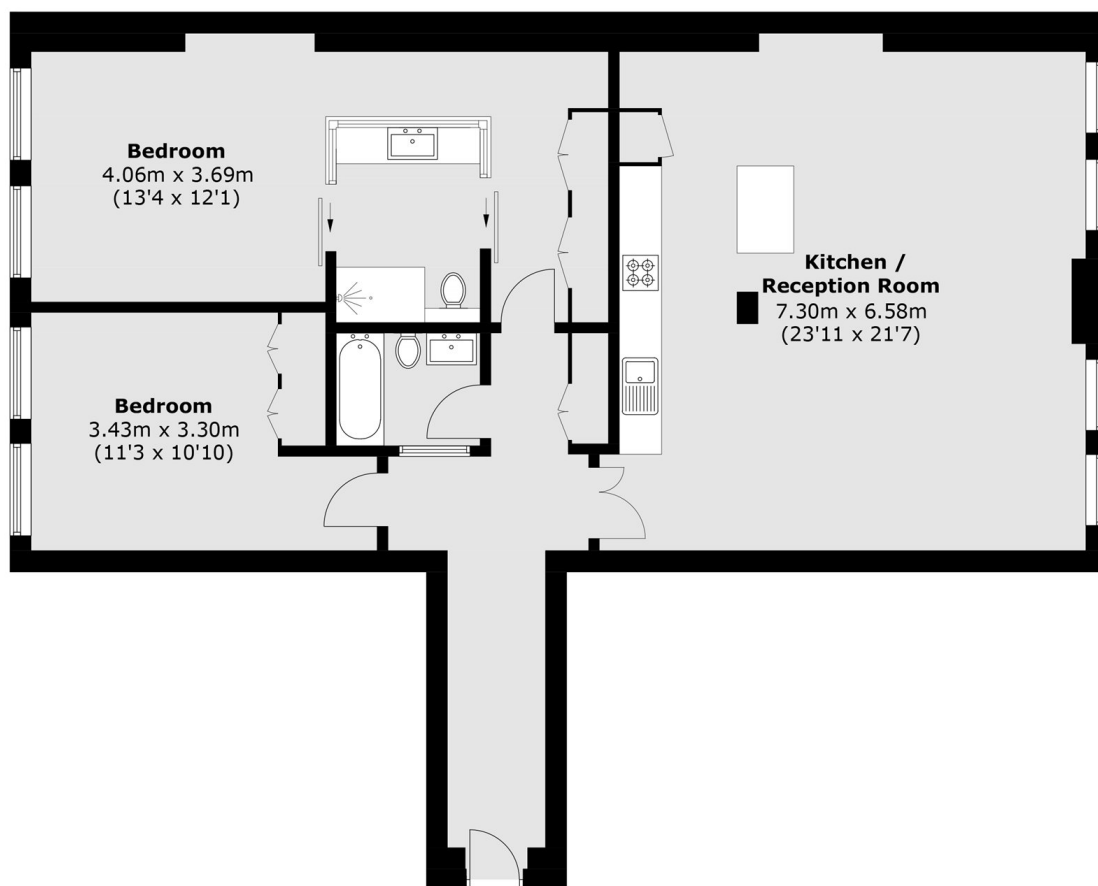
An immaculate Warehouse Conversion, spread over in excess of 1,200 sq ft, with exposed brick, large sash windows & high ceilings, a spacious open plan kitchen & living room, two double bedrooms & two bathrooms, sold with a Share of Freehold. This is a chain free sale.

The Jam Factory is one of SE1's most desirable developments, ideally situated on Rothsay Street, just moments from Bermondsey Street with its vibrant mix of restaurants, cafés, and galleries. London Bridge, Borough Market, and the South Bank are all within easy reach, offering an exceptional lifestyle in the heart of London.

Features

- Over 1,200 Sq Ft
- High Ceilings & Sash Windows
- Two Double Bedrooms
- Two Bathrooms
- 24 Hour Concierge
- Valid EWS1 Form
- Chain Free Sale

Green Walk, London, SE1



Total area (approx.): 115.0 sq. m (1,238.0 sq. ft)