



Southwark Bridge Road, SE1

£553 Per week

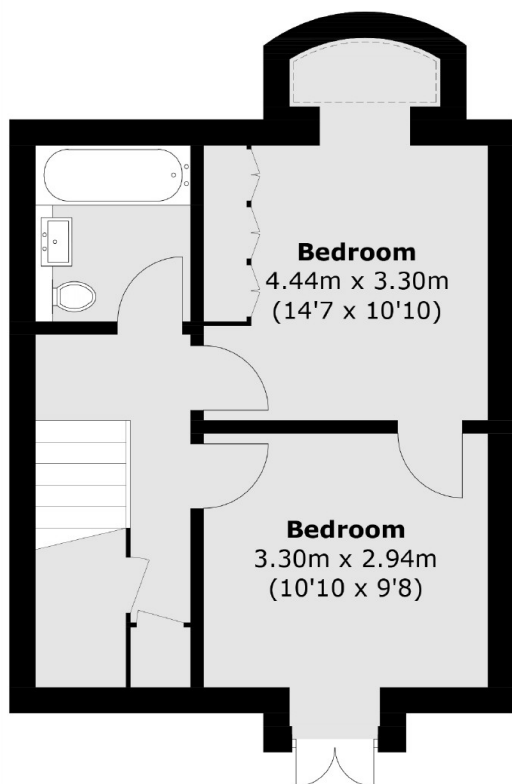
2 Bed apartment for rent in Borough SE1. This well presented raised ground and lower ground floor maisonette offers excellent bright and spacious open plan living accommodation with 2 well proportioned bedrooms a luxury bathroom and separate cloakroom. Located just off Great Suffolk St, and only a short walk to Borough Station, Borough Market and London Bridge.

The property is a short walk from Borough Station and London Bridge.

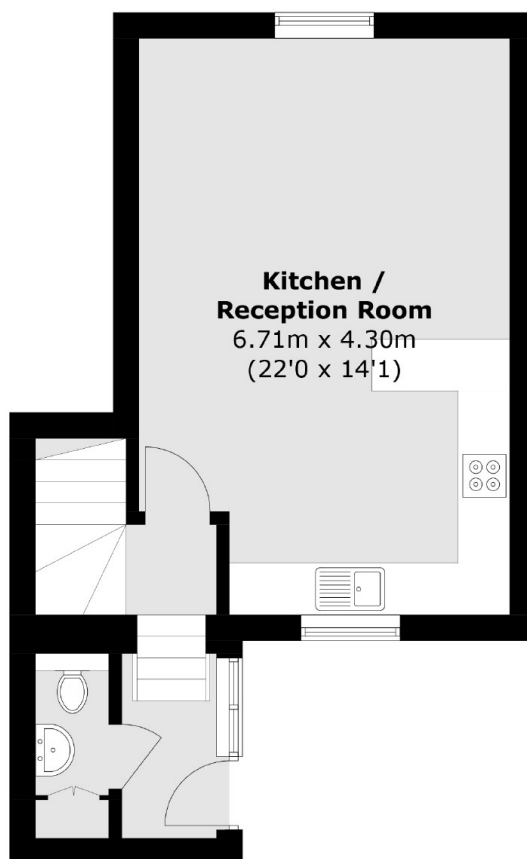
Features

- 2 Double bedrooms
- Bathroom
- Private terrace
- Fitted kitchen
- Underfloor heating
- Part furnished

Southwark Bridge Road, London, SE1



Basement



Ground Floor

Total area (approx.): 72.5 sq. m (780.4 sq. ft)