



Belvedere Road, SE1

£484 Per week

A well presented one bedroom apartment in this exclusive riverside development. The property has wood flooring, high ceilings, a separate kitchen and benefits from on-site facilities including pool, gym and 24hr concierge.

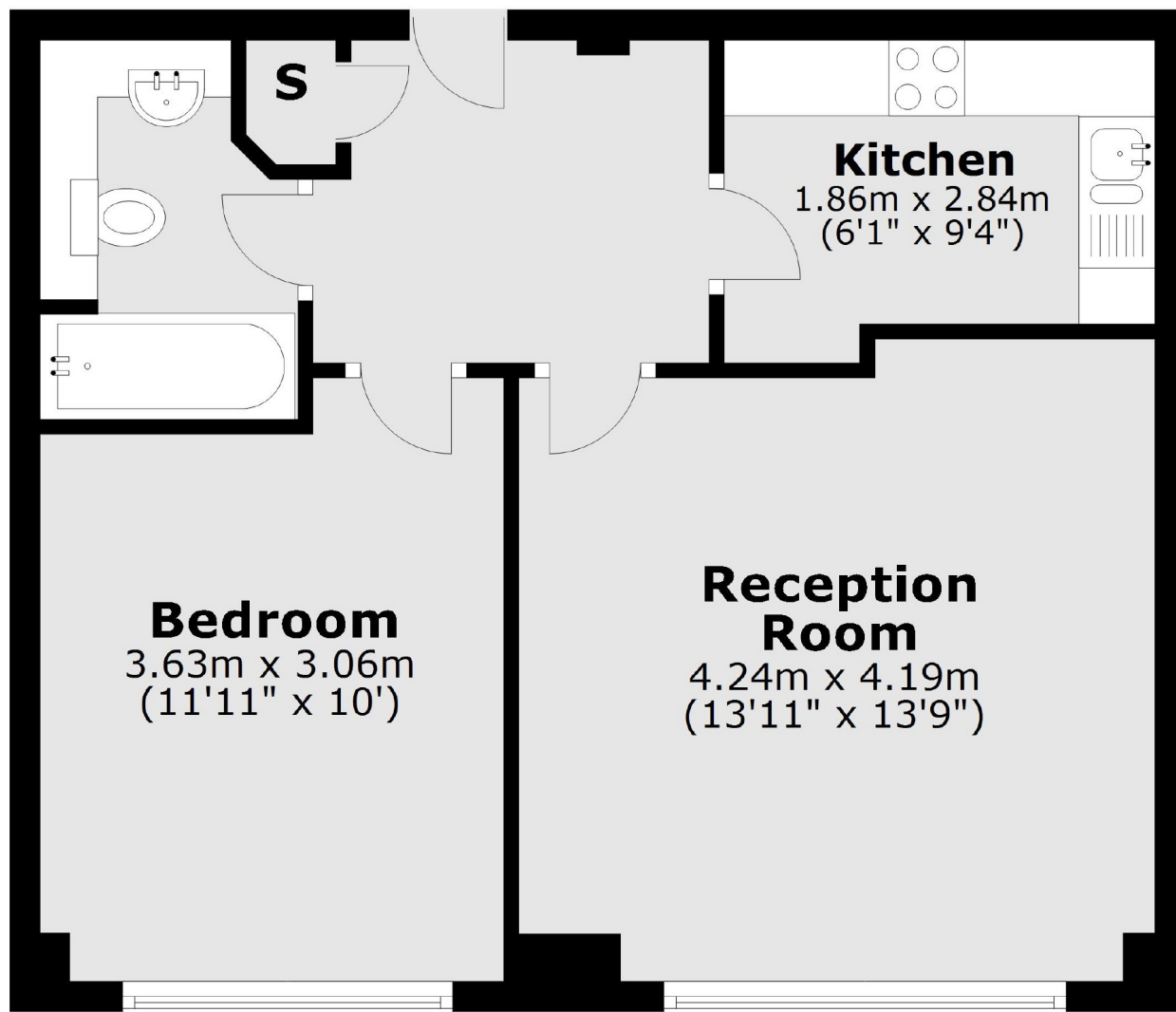
Well located for transport, the development overlooks some of London's most well know landmarks including Big Ben and the London Eye. Rapidly evolving recent additions to the area include Gails Bakery and a new M&S.

Features

- On-Site Pool and Gym
- 24 Hour Concierge
- Large Windows
- Wood Flooring
- Separate Kitchen
- Convenient location

Belvedere Road,
London, SE1

Lower Ground Floor



Total area: approx. 45.6 sq. metres (491.3 sq. feet)