



## Pages Walk, SE1

£795,000

This impressive two-bedroom apartment spans a very generous 860 sq ft and has been thoughtfully reconfigured to create a bright, contemporary home of real character, with a large kitchen island, a stylish new media wall, extensive built-in storage and air-conditioning throughout.

Alwen Court enjoys an enviable position within easy reach of London Bridge station, placing excellent transport links right on the doorstep. The Shard and Borough Market are only a short stroll away, while the vibrant cafés, restaurants and boutiques of Bermondsey Street add to

### Features

Impeccably Finished  
Air-Conditioning Throughout  
Two Double Bedrooms





## Pages Walk, SE1

Floor-to-ceiling glazing and a westerly aspect, draw in abundant natural light, while wide sliding doors open onto a large private balcony. The result is a seamless connection between the interior and the outdoors.

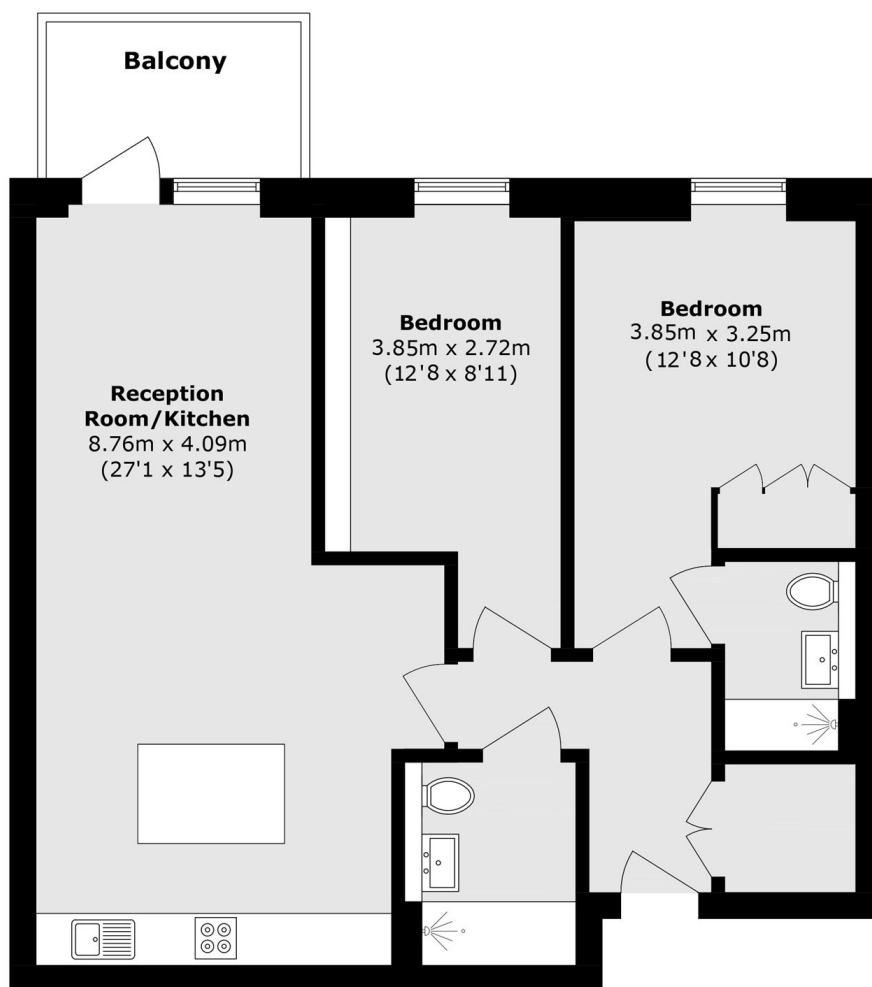
The recent refurbishment has introduced a host of refined touches, including custom-built storage, a murphy bed in the spare bedroom, a very generous kitchen island with extensive bar seating, and a fully integrated wine fridge, bringing together style, comfort, and modern practicality in one beautifully crafted space.

Alwen Court is one of SE1's premier new developments with communal gardens, an on-site porter and secure entry. There is a genuine community feel here, with an active residents group and social events planned through the year.





# Pages Walk, London, SE1



Total area (approx.): 79.9 sq. m (860.0 sq. ft)

Balcony area (approx.): 5.2 sq. m (55.9 sq. ft)