



Pages Walk, SE1

£750,000

This impressive two-bedroom apartment spans a very generous 860 sq ft and has been thoughtfully reconfigured to create a bright, contemporary home of real character, with a large kitchen island, a stylish new media wall, extensive built-in storage and air-conditioning throughout.

Alwen Court enjoys an enviable position within easy reach of London Bridge station. The Shard and Borough Market are only a short stroll away, while the vibrant cafés, restaurants and boutiques of Bermondsey Street add to the area's exceptional appeal.

Features

OIEO £750,000
Impeccably Finished
Air-Conditioning Throughout
Two Double Bedrooms



Pages Walk, SE1

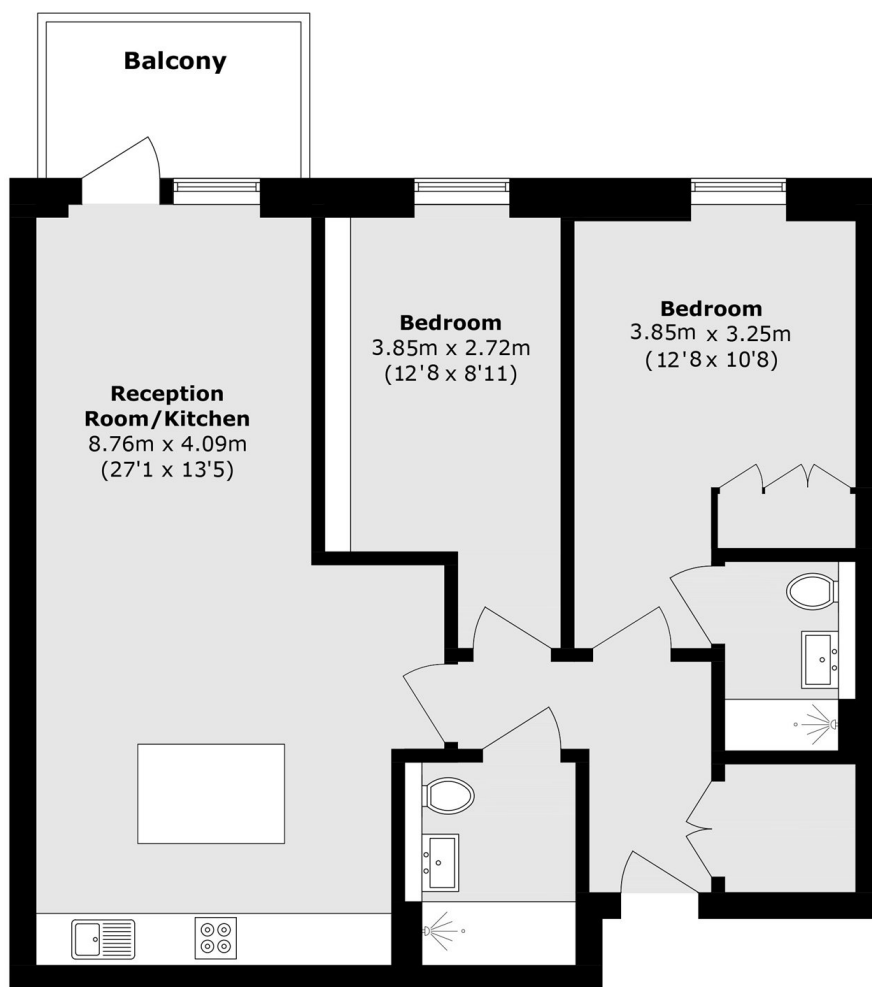
Floor-to-ceiling glazing and a westerly aspect, draw in abundant natural light, while wide sliding doors open onto a large private balcony. The result is a seamless connection between the interior and the outdoors.

The recent refurbishment has introduced a host of refined touches, including custom-built storage, a murphy bed in the spare bedroom, a very generous kitchen island with extensive bar seating, bringing together style, comfort, and modern practicality in one beautifully crafted space.

Alwen Court is one of SE1's premier new developments with communal gardens, an on-site porter and secure entry. There is a genuine community feel here, with an active residents group and social events planned through the year.



Pages Walk, London, SE1



Total area (approx.): 79.9 sq. m (860.0 sq. ft)

Balcony area (approx.): 5.2 sq. m (55.9 sq. ft)