



Triptych Place, SE1

£2,000,000

An immaculately presented and very high spec apartment with a very large open plan living room and kitchen, leading onto a private balcony, along with two generous double bedrooms, two bathrooms and ample built-in storage. Sold chain free and benefitting from a 24 hour concierge, cinema room, business lounge and games room.

Triptych, one of SE1's premier new developments, is just moments from the iconic Borough Market, Shakespeare's Globe Theatre, and the Tate Modern. With excellent connectivity via London Bridge Station and the Millennium Bridge, it offers the perfect blend of culture, convenience, and city living.

Features

- 7th Floor Apartment
- Dual Aspect
- Over 1,300 sq ft
- Two Double Bedrooms
- Two Bathrooms
- Private Balcony
- 24 Hour Concierge
- Chain Free Sale



Triptych Place, SE1

Providing almost 1,400 sq ft of luxury turn-key living, this two bedroom apartment is fully appointed with Miele appliances, underfloor heating, touch pad controlled lighting, comfort cooling and exceptional design features throughout.

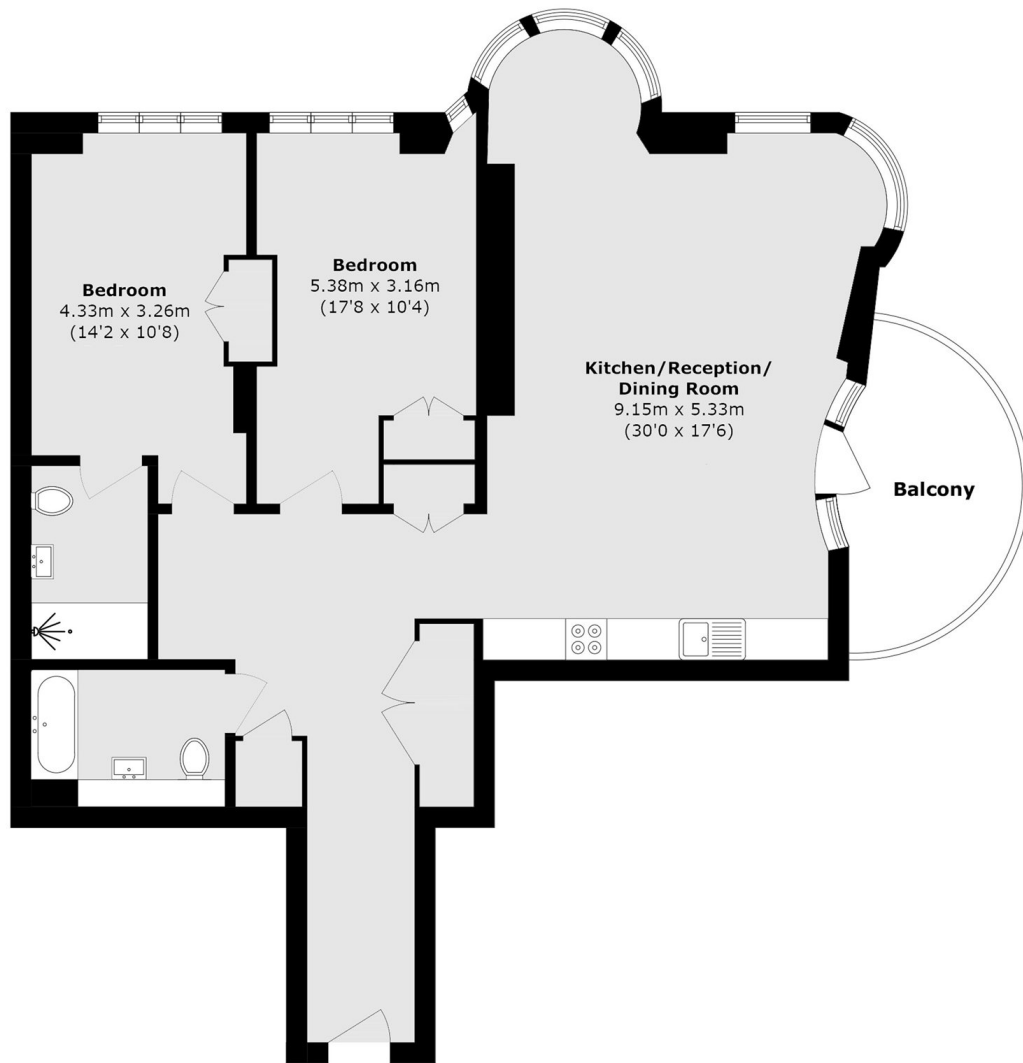
Both bedrooms are generous double rooms, each with ample built-in wardrobes. The principal bedroom benefits from a sleek three piece shower room, whilst the second bedroom is served by a further bathroom, accessed via the hallway.

The main living space allows plenty of space for every day living and for entertaining, with space for a large table, additional seating and a high spec kitchen, with premium integrated appliances, elegant stone worktops and a large wine fridge

Residents have access to a number of exclusive facilities, including a residents' lounge, workspace facilities, a cinema room, games room, landscape gardens and a 24 hour concierge.



Triptych Place, London, SE1



Seventh Floor

Total area (approx.): 127.9 sq. m (1376.7 sq. ft)

Balcony area (approx.): 9.6 sq. m (103.3 sq. ft)